



ELECTRONIC COPY

LG787616234
Report verification at igi.org



April 18, 2026
IGI Report Number **LG787616234**
Description **LABORATORY GROWN DIAMOND**
Shape and Cutting Style **SQUARE CUSHION MODIFIED BRILLIANT**

Measurements **7.69 X 7.35 X 4.98 MM**

GRADING RESULTS

Carat Weight **2.60 CARATS**
Color Grade **FANCY INTENSE YELLOW**
Clarity Grade **VS 1**

April 18, 2026
IGI Report Number **LG787616234**
Description **LABORATORY GROWN DIAMOND**
Shape and Cutting Style **SQUARE CUSHION MODIFIED BRILLIANT**
Measurements **7.69 X 7.35 X 4.98 MM**

GRADING RESULTS

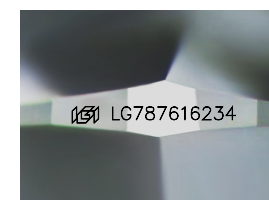
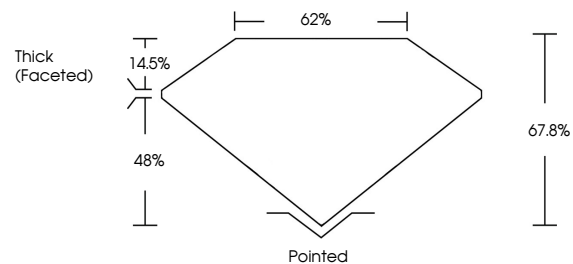
Carat Weight **2.60 CARATS**
Color Grade **FANCY INTENSE YELLOW**
Clarity Grade **VS 1**

ADDITIONAL GRADING INFORMATION

Polish **EXCELLENT**
Symmetry **EXCELLENT**
Fluorescence **NONE**
Inscription(s) **IGI LG787616234**

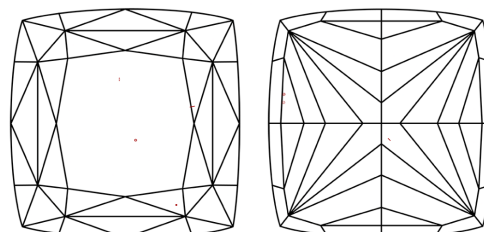
Comments: This Laboratory Grown Diamond was created by Chemical Vapor Deposition (CVD) growth process.

PROPORTIONS



Sample Image Used

CLARITY CHARACTERISTICS



KEY TO SYMBOLS

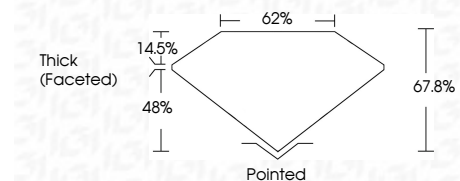
Red symbols indicate internal characteristics.
Green symbols indicate external characteristics.

COLOR

D E F G H I J Faint Very Light Light

CLARITY

FL	IF	VS ¹⁻²	VS ¹⁻²	SI ¹⁻²	I ¹⁻³
Flawless	Internally Flawless	Very Very Slightly Included	Very Slightly Included	Slightly Included	Included



ADDITIONAL GRADING INFORMATION

Polish **EXCELLENT**
Symmetry **EXCELLENT**
Fluorescence **NONE**
Inscription(s) **IGI LG787616234**
Comments: This Laboratory Grown Diamond was created by Chemical Vapor Deposition (CVD) growth process.



IGI



April 18, 2026
IGI Report No LG787616234
SQUARE CUSHION MODIFIED BRILLIANT
7.69 X 7.35 X 4.98 MM
2.60 CARATS
FANCY INTENSE YELLOW
VS 1
67.0%
62%
Thick (Faceted)
Pointed
EXCELLENT
EXCELLENT
NONE
IGI LG787616234
Comments: This Laboratory Grown Diamond was created by Chemical Vapor Deposition (CVD) growth process.