



LABORATORY GROWN DIAMOND REPORT

April 1, 2026
 IGI Report Number **LG787613477**
 Description **LABORATORY GROWN DIAMOND**
 Shape and Cutting Style **ROUND BRILLIANT**
 Measurements **5.61 - 5.69 X 3.71 MM**

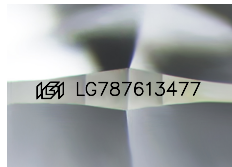
GRADING RESULTS

Carat Weight **0.76 CARAT**
 Color Grade **D**
 Clarity Grade **VS 1**
 Cut Grade **FAIR**

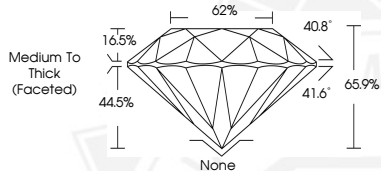
ADDITIONAL GRADING INFORMATION

Polish **VERY GOOD**
 Symmetry **VERY GOOD**
 Fluorescence **NONE**
 Inscription(s) **IGI LG787613477**

Comments: This Laboratory Grown Diamond was created by Chemical Vapor Deposition (CVD) growth process. Type IIa



Sample Image Used



April 1, 2026
 IGI Report Number **LG787613477**
ROUND BRILLIANT
LABORATORY GROWN DIAMOND
5.61 - 5.69 X 3.71 MM
 Carat Weight **0.76 CARAT**
 Color Grade **D**
 Clarity Grade **VS 1**
 Cut Grade **FAIR**
 Polish **VERY GOOD**
 Symmetry **VERY GOOD**
 Fluorescence **NONE**
 Inscription(s) **IGI LG787613477**
 Comments: This Laboratory Grown Diamond was created by Chemical Vapor Deposition (CVD) growth process. Type IIa



April 1, 2026
 IGI Report Number **LG787613477**
ROUND BRILLIANT
LABORATORY GROWN DIAMOND
5.61 - 5.69 X 3.71 MM
 Carat Weight **0.76 CARAT**
 Color Grade **D**
 Clarity Grade **VS 1**
 Cut Grade **FAIR**
 Polish **VERY GOOD**
 Symmetry **VERY GOOD**
 Fluorescence **NONE**
 Inscription(s) **IGI LG787613477**
 Comments: This Laboratory Grown Diamond was created by Chemical Vapor Deposition (CVD) growth process. Type IIa

THIS DOCUMENT WAS PRODUCED WITH THE FOLLOWING SECURITY MEASURES: SPECIAL DOCUMENT PAPER, INK SCREENS, WATERMARK, BACKGROUND DESIGNS, HOLOGRAM AND OTHER SECURITY FEATURES NOT LISTED AND DO EXCEED DOCUMENT SECURITY INDUSTRY GUIDELINES.