



ELECTRONIC COPY

LG787613434
Report verification at igi.org



March 31, 2026
IGI Report Number **LG787613434**
Description **LABORATORY GROWN DIAMOND**
Shape and Cutting Style **ROUND MODIFIED BRILLIANT**
Measurements **7.18 - 7.18 X 4.38 MM**
GRADING RESULTS
Carat Weight **1.58 CARAT**
Color Grade **FANCY INTENSE PINK**
Clarity Grade **VVS 2**

March 31, 2026
IGI Report Number **LG787613434**
Description **LABORATORY GROWN DIAMOND**
Shape and Cutting Style **ROUND MODIFIED BRILLIANT**
Measurements **7.18 - 7.18 X 4.38 MM**

GRADING RESULTS

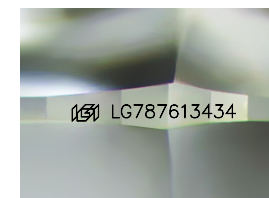
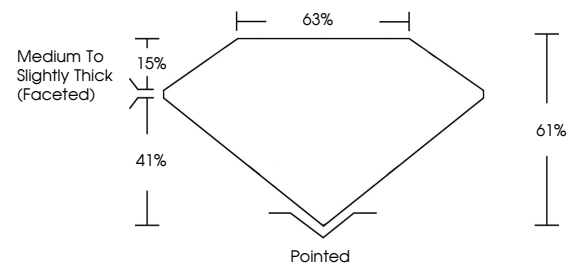
Carat Weight **1.58 CARAT**
Color Grade **FANCY INTENSE PINK**
Clarity Grade **VVS 2**

ADDITIONAL GRADING INFORMATION

Polish **EXCELLENT**
Symmetry **EXCELLENT**
Fluorescence **STRONG**
Inscription(s) **LG787613434**

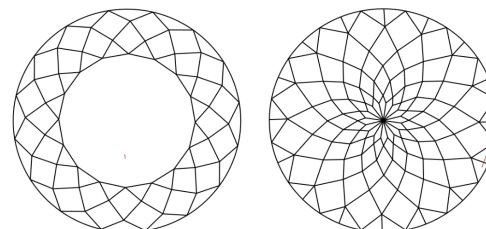
Comments: This Laboratory Grown Diamond was created by Chemical Vapor Deposition (CVD) growth process.
Indications of post-growth treatment.

PROPORTIONS



Sample Image Used

CLARITY CHARACTERISTICS



KEY TO SYMBOLS

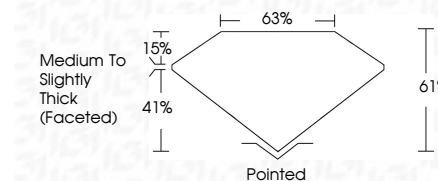
Red symbols indicate internal characteristics.
Green symbols indicate external characteristics.

COLOR

D E F G H I J Faint Very Light Light

CLARITY

FL	IF	VS ¹⁻²	VS ¹⁻²	SI ¹⁻²	I ¹⁻³
Flawless	Internally Flawless	Very Very Slightly Included	Very Slightly Included	Slightly Included	Included



ADDITIONAL GRADING INFORMATION

Polish **EXCELLENT**
Symmetry **EXCELLENT**
Fluorescence **STRONG**
Inscription(s) **LG787613434**
Comments: This Laboratory Grown Diamond was created by Chemical Vapor Deposition (CVD) growth process.
Indications of post-growth treatment.



March 31, 2026
IGI Report No **LG787613434**
ROUND MODIFIED BRILLIANT
1.58 CARAT
FANCY INTENSE PINK
VVS 2
61%
63%
Medium to Slightly Thick (Faceted)
Pointed
EXCELLENT
EXCELLENT
STRONG
IGI LG787613434
Comments: This Laboratory Grown Diamond was created by Chemical Vapor Deposition (CVD) growth process.
Indications of post-growth treatment.