



ELECTRONIC COPY

LG787612645
Report verification at igi.org



March 27, 2026
IGI Report Number **LG787612645**
Description **LABORATORY GROWN DIAMOND**
Shape and Cutting Style **HEXAGONAL MODIFIED
BRILLIANT**
Measurements **12.96 X 6.98 X 4.51 MM**
GRADING RESULTS
Carat Weight **2.54 CARATS**
Color Grade **E**
Clarity Grade **VVS 2**

LABORATORY GROWN DIAMOND REPORT

March 27, 2026
IGI Report Number **LG787612645**
Description **LABORATORY GROWN DIAMOND**
Shape and Cutting Style **HEXAGONAL MODIFIED
BRILLIANT**
Measurements **12.96 X 6.98 X 4.51 MM**

GRADING RESULTS

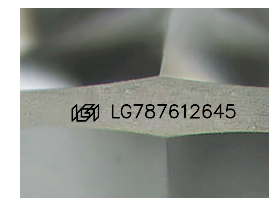
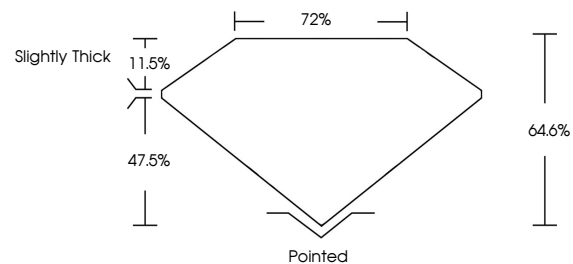
Carat Weight **2.54 CARATS**
Color Grade **E**
Clarity Grade **VVS 2**

ADDITIONAL GRADING INFORMATION

Polish **EXCELLENT**
Symmetry **EXCELLENT**
Fluorescence **NONE**
Inscription(s) **IGI LG787612645**

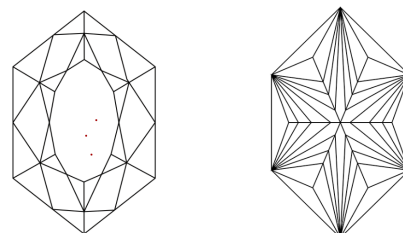
Comments: This Laboratory Grown Diamond was created by Chemical Vapor Deposition (CVD) growth process.
Type IIa

PROPORTIONS



Sample Image Used

CLARITY CHARACTERISTICS



KEY TO SYMBOLS

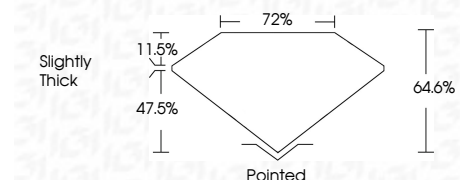
Red symbols indicate internal characteristics.
Green symbols indicate external characteristics.

COLOR

D E F G H I J Faint Very Light Light

CLARITY

| FL | IF | VVS ¹⁻² | VS ¹⁻² | SI ¹⁻² | I ¹⁻³ |
|----------|---------------------|-----------------------------|------------------------|-------------------|------------------|
| Flawless | Internally Flawless | Very Very Slightly Included | Very Slightly Included | Slightly Included | Included |



ADDITIONAL GRADING INFORMATION

Polish **EXCELLENT**
Symmetry **EXCELLENT**
Fluorescence **NONE**
Inscription(s) **IGI LG787612645**
Comments: This Laboratory Grown Diamond was created by Chemical Vapor Deposition (CVD) growth process.
Type IIa



March 27, 2026
IGI Report No LG787612645
HEXAGONAL MODIFIED BRILLIANT
12.96 X 6.98 X 4.51 MM
Carat Weight **2.54 CARATS**
Color Grade **E**
Clarity Grade **VVS 2**
Depth **64.6%**
Table **72%**
Girdle **Slightly Thick**
Culet **Pointed**
Polish **EXCELLENT**
Symmetry **EXCELLENT**
Fluorescence **NONE**
Inscription(s) **IGI LG787612645**
Comments: This Laboratory Grown Diamond was created by Chemical Vapor Deposition (CVD) growth process.
Type IIa