



ELECTRONIC COPY

LG787610972
Report verification at igi.org



April 9, 2026
IGI Report Number **LG787610972**
Description **LABORATORY GROWN DIAMOND**
Shape and Cutting Style **SQUARE CUSHION MODIFIED BRILLIANT**
Measurements **6.53 X 6.41 X 4.45 MM**
GRADING RESULTS
Carat Weight **1.65 CARAT**
Color Grade **FANCY VIVID YELLOW**
Clarity Grade **VS 1**

April 9, 2026
IGI Report Number **LG787610972**
Description **LABORATORY GROWN DIAMOND**
Shape and Cutting Style **SQUARE CUSHION MODIFIED BRILLIANT**
Measurements **6.53 X 6.41 X 4.45 MM**

GRADING RESULTS

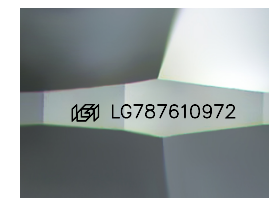
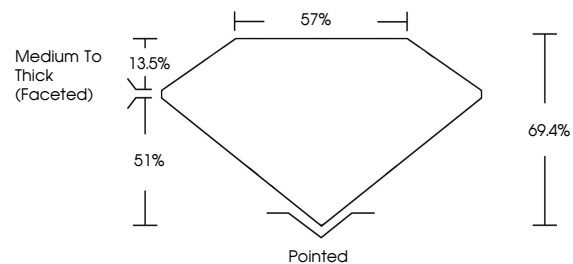
Carat Weight **1.65 CARAT**
Color Grade **FANCY VIVID YELLOW**
Clarity Grade **VS 1**

ADDITIONAL GRADING INFORMATION

Polish **EXCELLENT**
Symmetry **EXCELLENT**
Fluorescence **NONE**
Inscription(s) **IGI LG787610972**

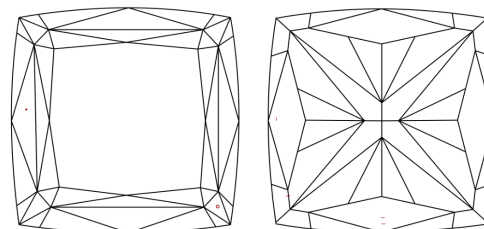
Comments: This Laboratory Grown Diamond was created by Chemical Vapor Deposition (CVD) growth process.

PROPORTIONS



Sample Image Used

CLARITY CHARACTERISTICS



KEY TO SYMBOLS

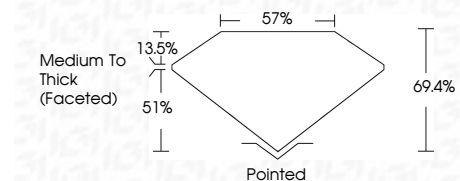
Red symbols indicate internal characteristics.
Green symbols indicate external characteristics.

COLOR

D E F G H I J Faint Very Light Light

CLARITY

| FL | IF | VS ¹⁻² | VS ¹⁻² | SI ¹⁻² | I ¹⁻³ |
|----------|---------------------|-----------------------------|------------------------|-------------------|------------------|
| Flawless | Internally Flawless | Very Very Slightly Included | Very Slightly Included | Slightly Included | Included |



ADDITIONAL GRADING INFORMATION

Polish **EXCELLENT**
Symmetry **EXCELLENT**
Fluorescence **NONE**
Inscription(s) **IGI LG787610972**
Comments: This Laboratory Grown Diamond was created by Chemical Vapor Deposition (CVD) growth process.



IGI



April 9, 2026
IGI Report No. LG787610972
SQUARE CUSHION MODIFIED BRILLIANT
6.53 X 6.41 X 4.45 MM
1.65 CARAT
FANCY VIVID YELLOW
VS 1
69.4%
57%
Medium To Thick (Faceted)
Pointed
EXCELLENT
EXCELLENT
NONE
IGI LG787610972
Comments: This Laboratory Grown Diamond was created by Chemical Vapor Deposition (CVD) growth process.