



**ELECTRONIC COPY**

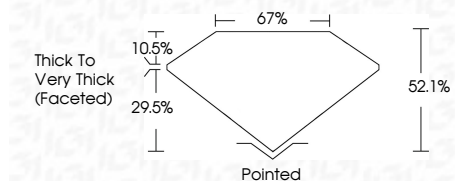
LG787610941  
Report verification at igi.org



April 9, 2026  
IGI Report Number **LG787610941**  
Description **LABORATORY GROWN DIAMOND**  
Shape and Cutting Style **HEART MODIFIED BRILLIANT**  
Measurements **6.42 X 7.21 X 3.76 MM**

**GRADING RESULTS**

Carat Weight **1.25 CARAT**  
Color Grade **FANCY YELLOW**  
Clarity Grade **VS 1**



**ADDITIONAL GRADING INFORMATION**

Polish **EXCELLENT**  
Symmetry **EXCELLENT**  
Fluorescence **NONE**  
Inscription(s) **IGI LG787610941**  
Comments: This Laboratory Grown Diamond was created by Chemical Vapor Deposition (CVD) growth process.



April 9, 2026  
IGI Report No LG787610941  
**HEART MODIFIED BRILLIANT**  
6.42 X 7.21 X 3.76 MM  
1.25 CARAT  
FANCY YELLOW  
VS 1  
62.1%  
67%  
Thick to Very Thick (Faceted)  
Pointed  
EXCELLENT  
EXCELLENT  
NONE  
IGI LG787610941  
Comments: This Laboratory Grown Diamond was created by Chemical Vapor Deposition (CVD) growth process.

April 9, 2026  
IGI Report Number **LG787610941**  
Description **LABORATORY GROWN DIAMOND**  
Shape and Cutting Style **HEART MODIFIED BRILLIANT**  
Measurements **6.42 X 7.21 X 3.76 MM**

**GRADING RESULTS**

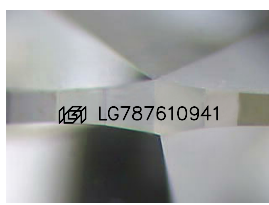
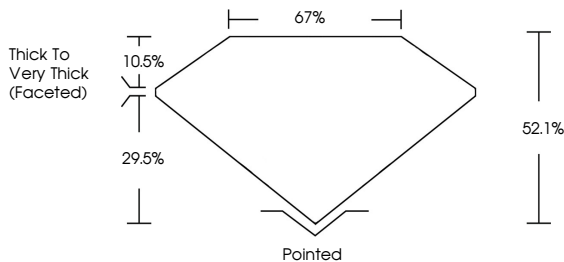
Carat Weight **1.25 CARAT**  
Color Grade **FANCY YELLOW**  
Clarity Grade **VS 1**

**ADDITIONAL GRADING INFORMATION**

Polish **EXCELLENT**  
Symmetry **EXCELLENT**  
Fluorescence **NONE**  
Inscription(s) **IGI LG787610941**

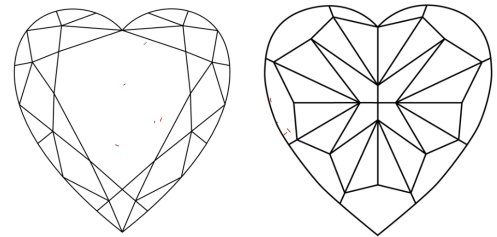
Comments: This Laboratory Grown Diamond was created by Chemical Vapor Deposition (CVD) growth process.

**PROPORTIONS**



Sample Image Used

**CLARITY CHARACTERISTICS**



**KEY TO SYMBOLS**

Red symbols indicate internal characteristics.  
Green symbols indicate external characteristics.

**COLOR**

D	E	F	G	H	I	J	Faint	Very Light	Light
---	---	---	---	---	---	---	-------	------------	-------

**CLARITY**

FL	IF	VS <sup>1-2</sup>	VS <sup>1-2</sup>	SI <sup>1-2</sup>	I <sup>1-3</sup>
Flawless	Internally Flawless	Very Very Slightly Included	Very Slightly Included	Slightly Included	Included

