



ELECTRONIC COPY

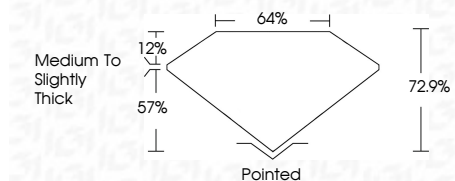
LG787604495
Report verification at igi.org



April 8, 2026
IGI Report Number **LG787604495**
Description **LABORATORY GROWN DIAMOND**
Shape and Cutting Style **PRINCESS CUT**
Measurements **6.49 X 6.45 X 4.70 MM**

GRADING RESULTS

Carat Weight **1.76 CARAT**
Color Grade **FANCY YELLOW**
Clarity Grade **VVS 2**

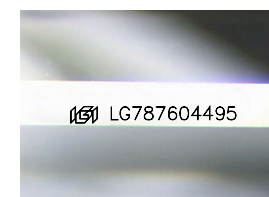


ADDITIONAL GRADING INFORMATION

Polish **EXCELLENT**
Symmetry **EXCELLENT**
Fluorescence **NONE**
Inscription(s) **IGI LG787604495**
Comments: This Laboratory Grown Diamond was created by Chemical Vapor Deposition (CVD) growth process.

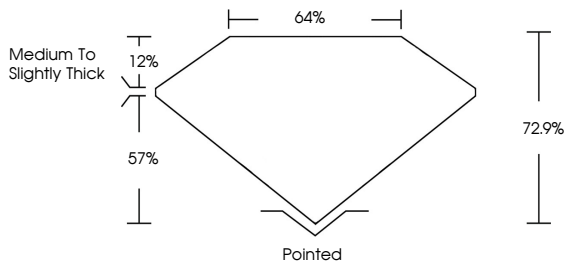


April 8, 2026
IGI Report No **LG787604495**
PRINCESS CUT
6.49 X 6.45 X 4.70 MM
Carat Weight **1.76 CARAT**
Color Grade **FANCY YELLOW**
Clarity Grade **VVS 2**
Depth **57%**
Table **12%**
Girdle **Medium to Slightly Thick**
Culet **Pointed**
Polish **EXCELLENT**
Symmetry **EXCELLENT**
Fluorescence **NONE**
Inscription(s) **IGI LG787604495**
Comments: This Laboratory Grown Diamond was created by Chemical Vapor Deposition (CVD) growth process.

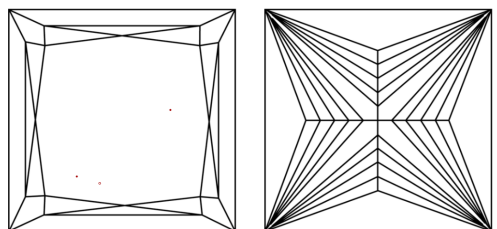


Sample Image Used

PROPORTIONS



CLARITY CHARACTERISTICS



KEY TO SYMBOLS

Red symbols indicate internal characteristics.
Green symbols indicate external characteristics.

COLOR

D E F G H I J Faint Very Light Light

CLARITY

FL	IF	VVS ¹⁻²	VS ¹⁻²	SI ¹⁻²	I ¹⁻³
Flawless	Internally Flawless	Very Very Slightly Included	Very Slightly Included	Slightly Included	Included

