



**ELECTRONIC COPY**

LG787604491  
Report verification at igi.org



April 8, 2026  
IGI Report Number **LG787604491**  
Description **LABORATORY GROWN DIAMOND**  
Shape and Cutting Style **ROUND BRILLIANT**  
Measurements **6.66 - 6.71 X 4.04 MM**  
**GRADING RESULTS**  
Carat Weight **1.09 CARAT**  
Color Grade **FANCY LIGHT YELLOW**  
Clarity Grade **VVS 2**  
Cut Grade **IDEAL**

April 8, 2026  
IGI Report Number **LG787604491**  
Description **LABORATORY GROWN DIAMOND**  
Shape and Cutting Style **ROUND BRILLIANT**  
Measurements **6.66 - 6.71 X 4.04 MM**

**GRADING RESULTS**

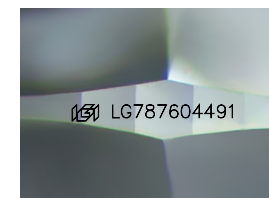
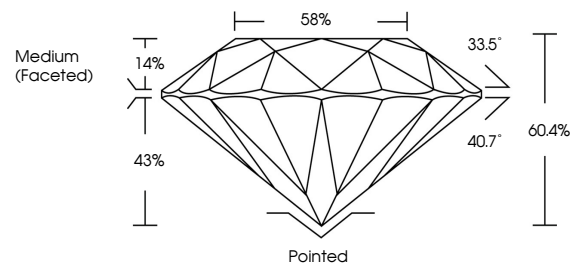
Carat Weight **1.09 CARAT**  
Color Grade **FANCY LIGHT YELLOW**  
Clarity Grade **VVS 2**  
Cut Grade **IDEAL**

**ADDITIONAL GRADING INFORMATION**

Polish **EXCELLENT**  
Symmetry **EXCELLENT**  
Fluorescence **NONE**  
Inscription(s) **IGI LG787604491**

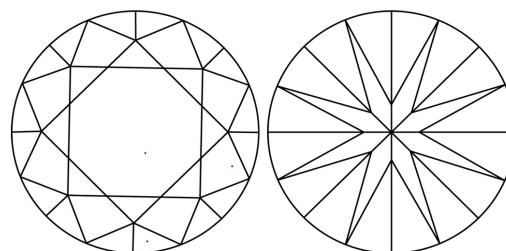
Comments: This Laboratory Grown Diamond was created by Chemical Vapor Deposition (CVD) growth process.

**PROPORTIONS**



Sample Image Used

**CLARITY CHARACTERISTICS**



**KEY TO SYMBOLS**

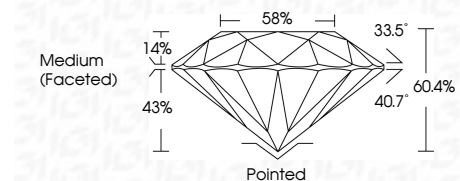
Red symbols indicate internal characteristics.  
Green symbols indicate external characteristics.

**COLOR**

D E F G H I J Faint Very Light Light

**CLARITY**

FL	IF	VVS <sup>1-2</sup>	VS <sup>1-2</sup>	SI <sup>1-2</sup>	I <sup>1-3</sup>
Flawless	Internally Flawless	Very Very Slightly Included	Very Slightly Included	Slightly Included	Included



**ADDITIONAL GRADING INFORMATION**

Polish **EXCELLENT**  
Symmetry **EXCELLENT**  
Fluorescence **NONE**  
Inscription(s) **IGI LG787604491**  
Comments: This Laboratory Grown Diamond was created by Chemical Vapor Deposition (CVD) growth process.



April 8, 2026  
IGI Report No **LG787604491**  
**ROUND BRILLIANT**  
**6.66 - 6.71 X 4.04 MM**  
Carat Weight **1.09 CARAT**  
Color Grade **FANCY LIGHT YELLOW**  
Clarity Grade **VVS 2**  
Depth **IDEAL**  
Table **60.4%**  
Girdle **58%**  
Medium (Faceted)  
Culet **Pointed**  
Polish **EXCELLENT**  
Symmetry **EXCELLENT**  
Fluorescence **NONE**  
Inscription(s) **IGI LG787604491**  
Comments: This Laboratory Grown Diamond was created by Chemical Vapor Deposition (CVD) growth process.