



**ELECTRONIC COPY**

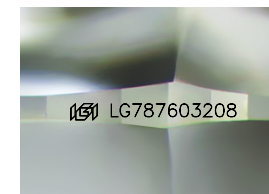
LG787603208  
Report verification at igi.org



April 9, 2026  
IGI Report Number **LG787603208**  
Description **LABORATORY GROWN DIAMOND**  
Shape and Cutting Style **ROUND MODIFIED BRILLIANT**  
Measurements **7.00 - 7.02 X 4.05 MM**

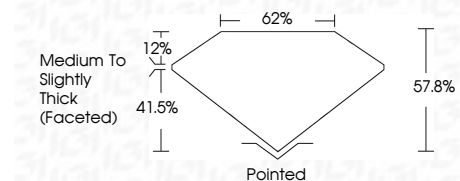
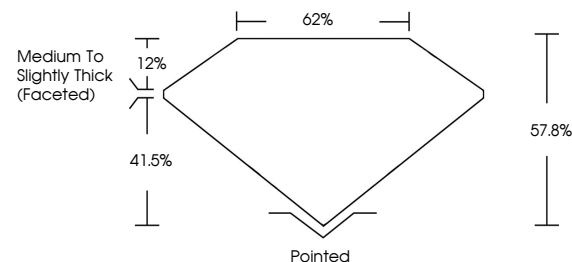
**GRADING RESULTS**

Carat Weight **1.34 CARAT**  
Color Grade **FANCY PINK**  
Clarity Grade **VS 1**

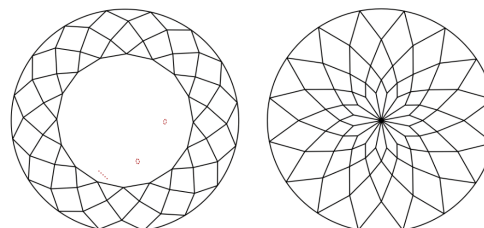


Sample Image Used

**PROPORTIONS**



**CLARITY CHARACTERISTICS**



**KEY TO SYMBOLS**

Red symbols indicate internal characteristics.  
Green symbols indicate external characteristics.

**COLOR**

D E F G H I J Faint Very Light Light

**CLARITY**

FL	IF	VS <sup>1-2</sup>	VS <sup>1-2</sup>	SI <sup>1-2</sup>	I <sup>1-3</sup>
Flawless	Internally Flawless	Very Very Slightly Included	Very Slightly Included	Slightly Included	Included

**ADDITIONAL GRADING INFORMATION**

Polish **VERY GOOD**  
Symmetry **EXCELLENT**  
Fluorescence **SLIGHT**  
Inscription(s) **IGI LG787603208**

Comments: This Laboratory Grown Diamond was created by Chemical Vapor Deposition (CVD) growth process. Indications of post-growth treatment.



April 9, 2026  
IGI Report No LG787603208  
**ROUND MODIFIED BRILLIANT**  
1.34 CARAT  
FANCY PINK  
VS 1  
7.00 - 7.02 X 4.05 MM  
Color Grade  
Clarity Grade  
Table  
Girdle  
Medium to Slightly Thick (Faceted)  
Culet  
Polish  
Symmetry  
Fluorescence  
Inscription(s)  
Pointed  
VERY GOOD  
EXCELLENT  
SLIGHT  
IGI LG787603208  
Comments: This Laboratory Grown Diamond was created by Chemical Vapor Deposition (CVD) growth process. Indications of post-growth treatment.