



ELECTRONIC COPY

LG787601954
Report verification at igi.org



April 9, 2026

IGI Report Number **LG787601954**

Description **LABORATORY GROWN DIAMOND**

Shape and Cutting Style **ROUND MIXED CUT**

Measurements **6.37 - 6.41 X 3.89 MM**

GRADING RESULTS

Carat Weight **1.04 CARAT**

Color Grade **FANCY INTENSE PINK**

Clarity Grade **VS 1**

April 9, 2026
IGI Report Number **LG787601954**
Description **LABORATORY GROWN DIAMOND**
Shape and Cutting Style **ROUND MIXED CUT**
Measurements **6.37 - 6.41 X 3.89 MM**

GRADING RESULTS

Carat Weight **1.04 CARAT**

Color Grade **FANCY INTENSE PINK**

Clarity Grade **VS 1**

ADDITIONAL GRADING INFORMATION

Polish **EXCELLENT**

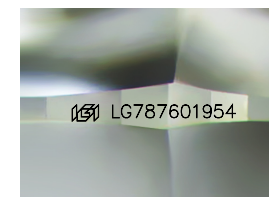
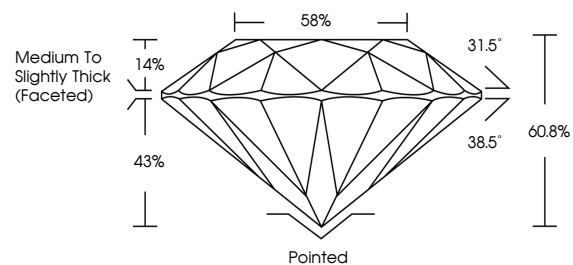
Symmetry **EXCELLENT**

Fluorescence **SLIGHT**

Inscription(s) **LG787601954**

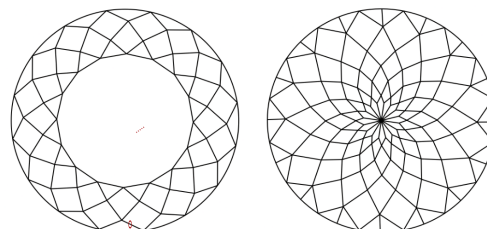
Comments: This Laboratory Grown Diamond was created by Chemical Vapor Deposition (CVD) growth process.
Indications of post-growth treatment.

PROPORTIONS



Sample Image Used

CLARITY CHARACTERISTICS



KEY TO SYMBOLS

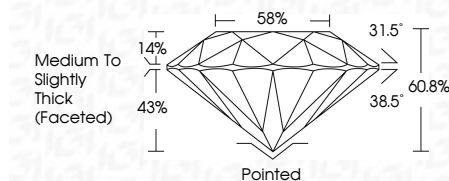
Red symbols indicate internal characteristics.
Green symbols indicate external characteristics.

COLOR

D E F G H I J Faint Very Light Light

CLARITY

FL	IF	VS ¹⁻²	VS ¹⁻²	SI ¹⁻²	I ¹⁻³
Flawless	Internally Flawless	Very Very Slightly Included	Very Slightly Included	Slightly Included	Included



ADDITIONAL GRADING INFORMATION

Polish **EXCELLENT**

Symmetry **EXCELLENT**

Fluorescence **SLIGHT**

Inscription(s) **LG787601954**

Comments: This Laboratory Grown Diamond was created by Chemical Vapor Deposition (CVD) growth process.
Indications of post-growth treatment.



April 9, 2026
IGI Report No **LG787601954**
ROUND MIXED CUT
1.04 CARAT
Carat Weight
Color Grade **FANCY INTENSE PINK**
Clarity Grade **VS 1**
Depth **60.8%**
Table **58%**
Girdle **Medium to Slightly Thick (Faceted)**
Culet **Pointed**
Polish **EXCELLENT**
Symmetry **EXCELLENT**
Fluorescence **SLIGHT**
Inscription(s) **LG787601954**
Comments: This Laboratory Grown Diamond was created by Chemical Vapor Deposition (CVD) growth process.
Indications of post-growth treatment.