



ELECTRONIC COPY

LG786699942
Report verification at igi.org



April 10, 2026
IGI Report Number LG786699942
Description LABORATORY GROWN DIAMOND
Shape and Cutting Style SQUARE CUSHION MODIFIED BRILLIANT
Measurements 7.47 X 7.40 X 4.88 MM
GRADING RESULTS
Carat Weight 2.60 CARATS
Color Grade FANCY VIVID BROWNISH PINK
Clarity Grade VS 1

April 10, 2026
IGI Report Number LG786699942
Description LABORATORY GROWN DIAMOND
Shape and Cutting Style SQUARE CUSHION MODIFIED BRILLIANT
Measurements 7.47 X 7.40 X 4.88 MM

GRADING RESULTS

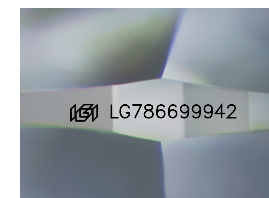
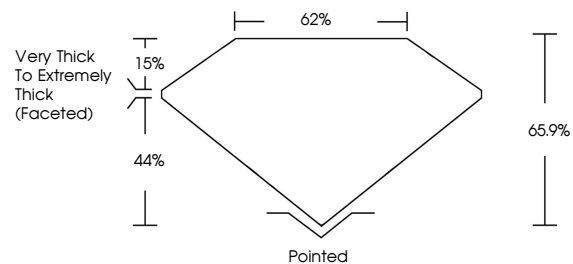
Carat Weight 2.60 CARATS
Color Grade FANCY VIVID BROWNISH PINK
Clarity Grade VS 1

ADDITIONAL GRADING INFORMATION

Polish EXCELLENT
Symmetry EXCELLENT
Fluorescence SLIGHT
Inscription(s) IGI LG786699942

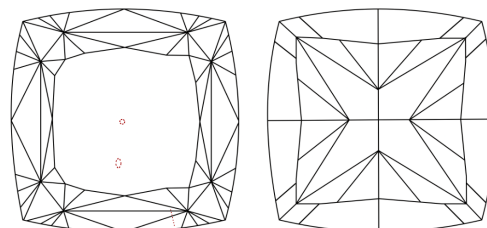
Comments: This Laboratory Grown Diamond was created by Chemical Vapor Deposition (CVD) growth process.
Indications of post-growth treatment.

PROPORTIONS



Sample Image Used

CLARITY CHARACTERISTICS



KEY TO SYMBOLS

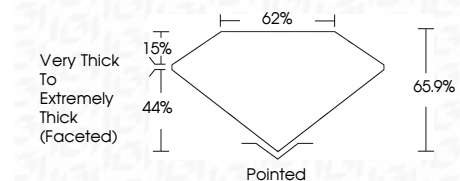
Red symbols indicate internal characteristics.
Green symbols indicate external characteristics.

COLOR

D E F G H I J Faint Very Light Light

CLARITY

FL IF VS 1-2 VS 2-3 SI 1-2 I 1-3
Flawless Internally Flawless Very Very Slightly Included Very Slightly Included Slightly Included Included



ADDITIONAL GRADING INFORMATION

Polish EXCELLENT
Symmetry EXCELLENT
Fluorescence SLIGHT
Inscription(s) IGI LG786699942
Comments: This Laboratory Grown Diamond was created by Chemical Vapor Deposition (CVD) growth process.
Indications of post-growth treatment.



April 10, 2026
IGI Report No LG786699942
SQUARE CUSHION MODIFIED BRILLIANT
2.60 CARATS
FANCY VIVID BROWNISH PINK
VS 1
65.9%
62%
Very Thick to Extremely Thick (Faceted)
Pointed
EXCELLENT
EXCELLENT
SLIGHT
IGI LG786699942
Comments: This Laboratory Grown Diamond was created by Chemical Vapor Deposition (CVD) growth process.
Indications of post-growth treatment.