



ELECTRONIC COPY

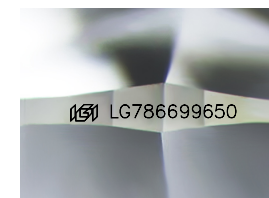
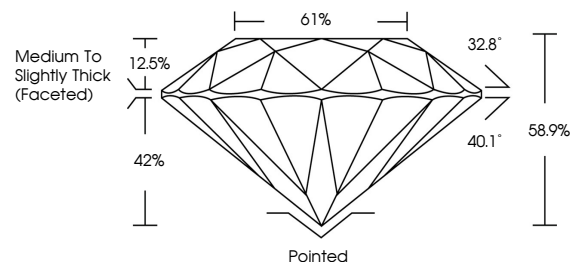
LG786699650
Report verification at igi.org



April 9, 2026
IGI Report Number **LG786699650**
Description **LABORATORY GROWN DIAMOND**
Shape and Cutting Style **ROUND BRILLIANT**
Measurements **8.13 - 8.16 X 4.80 MM**
GRADING RESULTS
Carat Weight **2.00 CARATS**
Color Grade **FANCY VIVID BLUE**
Clarity Grade **SI 1**
Cut Grade **EXCELLENT**

April 9, 2026
IGI Report Number **LG786699650**
Description **LABORATORY GROWN DIAMOND**
Shape and Cutting Style **ROUND BRILLIANT**
Measurements **8.13 - 8.16 X 4.80 MM**

PROPORTIONS

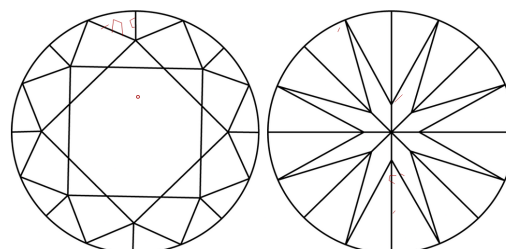


Sample Image Used

GRADING RESULTS

Carat Weight **2.00 CARATS**
Color Grade **FANCY VIVID BLUE**
Clarity Grade **SI 1**
Cut Grade **EXCELLENT**

CLARITY CHARACTERISTICS



KEY TO SYMBOLS

Red symbols indicate internal characteristics.
Green symbols indicate external characteristics.

ADDITIONAL GRADING INFORMATION

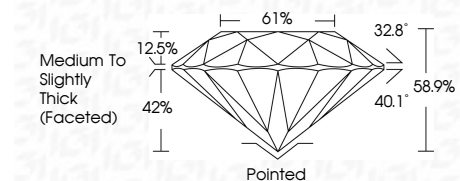
Polish **VERY GOOD**
Symmetry **EXCELLENT**
Fluorescence **NONE**
Inscription(s) **IGI LG786699650**

COLOR

D E F G H I J Faint Very Light Light

CLARITY

FL	IF	VS ¹⁻²	VS ¹⁻²	SI ¹⁻²	I ¹⁻³
Flawless	Internally Flawless	Very Very Slightly Included	Very Slightly Included	Slightly Included	Included



ADDITIONAL GRADING INFORMATION

Polish **VERY GOOD**
Symmetry **EXCELLENT**
Fluorescence **NONE**
Inscription(s) **IGI LG786699650**
Comments: This Laboratory Grown Diamond was created by Chemical Vapor Deposition (CVD) growth process. Indications of post-growth treatment.



April 9, 2026
IGI Report No **LG786699650**
ROUND BRILLIANT
8.13 - 8.16 X 4.80 MM
2.00 CARATS
Carat Weight **FANCY VIVID BLUE**
Color Grade **SI 1**
Clarity Grade **EXCELLENT**
Cut Grade **EXCELLENT**
Depth **58.9%**
Table **61%**
Girdle **Medium To Slightly Thick (Faceted)**
Culet **Pointed**
Polish **VERY GOOD**
Symmetry **EXCELLENT**
Fluorescence **NONE**
Inscriptions(s) **IGI LG786699650**
Comments: This Laboratory Grown Diamond was created by Chemical Vapor Deposition (CVD) growth process. Indications of post-growth treatment.