



ELECTRONIC COPY

LG786699600
Report verification at igi.org



April 22, 2026

IGI Report Number **LG786699600**

Description **LABORATORY GROWN DIAMOND**

Shape and Cutting Style **CUT CORNERED
RECTANGULAR MODIFIED
BRILLIANT**

Measurements **10.95 X 7.83 X 5.10 MM**

GRADING RESULTS

Carat Weight **4.10 CARATS**

Color Grade **FANCY VIVID YELLOW**

Clarity Grade **VS 2**

LABORATORY GROWN DIAMOND REPORT

April 22, 2026

IGI Report Number **LG786699600**

Description **LABORATORY GROWN DIAMOND**

Shape and Cutting Style **CUT CORNERED RECTANGULAR
MODIFIED BRILLIANT**

Measurements **10.95 X 7.83 X 5.10 MM**

GRADING RESULTS

Carat Weight **4.10 CARATS**

Color Grade **FANCY VIVID YELLOW**

Clarity Grade **VS 2**

ADDITIONAL GRADING INFORMATION

Polish **EXCELLENT**

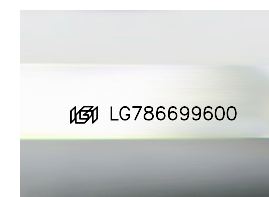
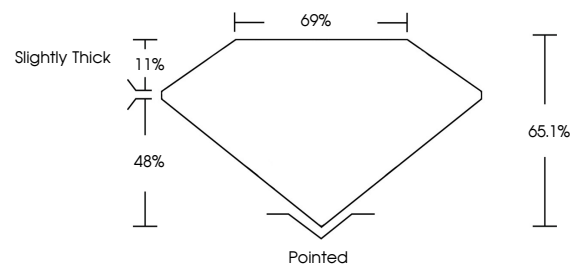
Symmetry **EXCELLENT**

Fluorescence **NONE**

Inscription(s) **IGI LG786699600**

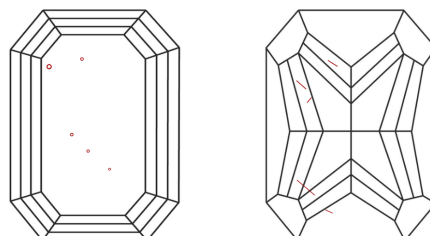
Comments: This Laboratory Grown Diamond was created by Chemical Vapor Deposition (CVD) growth process.

PROPORTIONS



Sample Image Used

CLARITY CHARACTERISTICS



KEY TO SYMBOLS

Red symbols indicate internal characteristics.
Green symbols indicate external characteristics.

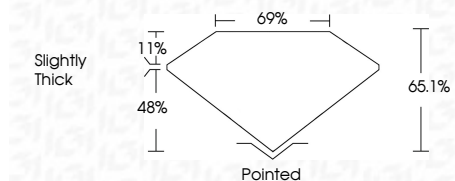
COLOR

D E F G H I J Faint Very Light Light

CLARITY

FL IF VS¹⁻² VS¹⁻² SI¹⁻² I¹⁻³

Flawless Internally Flawless Very Very Slightly Included Very Slightly Included Slightly Included Included



ADDITIONAL GRADING INFORMATION

Polish **EXCELLENT**

Symmetry **EXCELLENT**

Fluorescence **NONE**

Inscription(s) **IGI LG786699600**

Comments: This Laboratory Grown Diamond was created by Chemical Vapor Deposition (CVD) growth process.



IGI



April 22, 2026
IGI Report No LG786699600
CUT CORNERED RECT. MODIFIED BRILLIANT

4.10 CARATS
Carat Weight
FANCY VIVID YELLOW
Color Grade

VS 2
Depth 65.1%
Table 69%
Girdle Slightly Thick

Pointed
Culet
EXCELLENT
Polish
EXCELLENT
Symmetry
EXCELLENT
Fluorescence
NONE
Inscription(s)
IGI LG786699600

Comments: This Laboratory Grown Diamond was created by Chemical Vapor Deposition (CVD) growth process.