



ELECTRONIC COPY

LG786698990
Report verification at igi.org



April 4, 2026

IGI Report Number **LG786698990**

Description **LABORATORY GROWN DIAMOND**

Shape and Cutting Style **EMERALD CUT**

Measurements **11.22 X 7.14 X 4.92 MM**

GRADING RESULTS

Carat Weight **4.01 CARATS**

Color Grade **FANCY INTENSE PINK**

Clarity Grade **VS 2**

April 4, 2026
IGI Report Number **LG786698990**
Description **LABORATORY GROWN DIAMOND**
Shape and Cutting Style **EMERALD CUT**
Measurements **11.22 X 7.14 X 4.92 MM**

GRADING RESULTS

Carat Weight **4.01 CARATS**

Color Grade **FANCY INTENSE PINK**

Clarity Grade **VS 2**

ADDITIONAL GRADING INFORMATION

Polish **EXCELLENT**

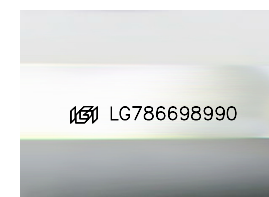
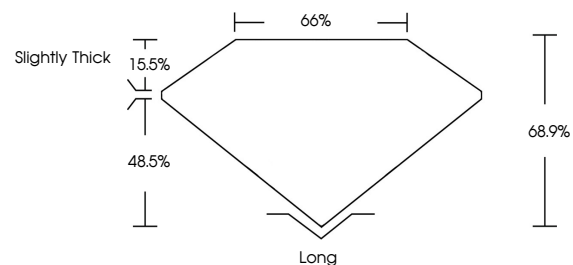
Symmetry **EXCELLENT**

Fluorescence **SLIGHT**

Inscription(s) **LG786698990**

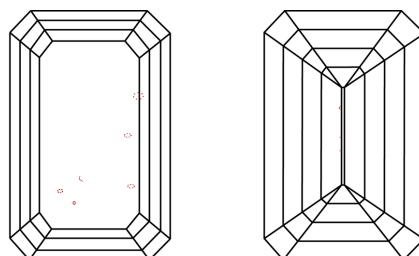
Comments: This Laboratory Grown Diamond was created by Chemical Vapor Deposition (CVD) growth process.
Indications of post-growth treatment.

PROPORTIONS



Sample Image Used

CLARITY CHARACTERISTICS



KEY TO SYMBOLS

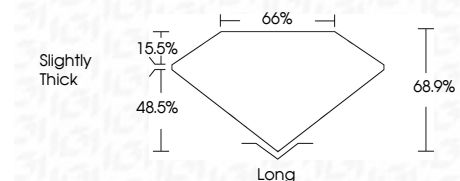
Red symbols indicate internal characteristics.
Green symbols indicate external characteristics.

COLOR

D E F G H I J Faint Very Light Light

CLARITY

FL	IF	VS ¹⁻²	VS ¹⁻²	SI ¹⁻²	I ¹⁻³
Flawless	Internally Flawless	Very Very Slightly Included	Very Slightly Included	Slightly Included	Included



ADDITIONAL GRADING INFORMATION

Polish **EXCELLENT**

Symmetry **EXCELLENT**

Fluorescence **SLIGHT**

Inscription(s) **LG786698990**

Comments: This Laboratory Grown Diamond was created by Chemical Vapor Deposition (CVD) growth process.
Indications of post-growth treatment.



April 4, 2026
IGI Report No **LG786698990**
EMERALD CUT

4.01 CARATS
Carat Weight
FANCY INTENSE PINK
Color Grade
VS 2
Clarity Grade
68.9%
Depth
65%
Table
Slightly Thick
Girdle

Long
Cutlet
EXCELLENT
Polish
EXCELLENT
Symmetry
SLIGHT
Fluorescence
Inscription(s)
 LG786698990

Comments: This Laboratory Grown Diamond was created by Chemical Vapor Deposition (CVD) growth process.
Indications of post-growth treatment.