



LABORATORY GROWN DIAMOND REPORT

March 31, 2026
 IGI Report Number **LG786698935**
 Description **LABORATORY GROWN DIAMOND**
 Shape and Cutting Style **PRINCESS CUT**
 Measurements **3.59 X 3.58 X 2.55 MM**

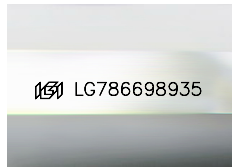
GRADING RESULTS

Carat Weight **0.29 CARAT**
 Color Grade **FANCY VIVID PINK**
 Clarity Grade **VS 1**

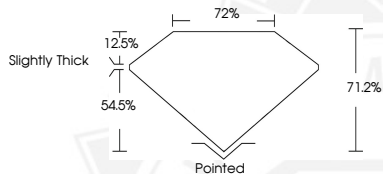
ADDITIONAL GRADING INFORMATION

Polish **VERY GOOD**
 Symmetry **GOOD**
 Fluorescence **SLIGHT**
 Inscription(s) **IGI LG786698935**

Comments: This Laboratory Grown Diamond was created by
 Chemical Vapor Deposition (CVD) growth process.
 Indications of post-growth treatment.



Sample Image Used



March 31, 2026
 IGI Report Number **LG786698935**
PRINCESS CUT
LABORATORY GROWN DIAMOND
3.59 X 3.58 X 2.55 MM
 Carat Weight **0.29 CARAT**
 Color Grade **FANCY VIVID PINK**
 Clarity Grade **VS 1**
 Polish **VERY GOOD**
 Symmetry **GOOD**
 Fluorescence **SLIGHT**
 Inscription(s) **IGI LG786698935**

Comments: This Laboratory Grown
 Diamond was created by
 Chemical Vapor Deposition (CVD)
 growth process. Indications of
 post-growth treatment.



March 31, 2026
 IGI Report Number **LG786698935**
PRINCESS CUT
LABORATORY GROWN DIAMOND
3.59 X 3.58 X 2.55 MM
 Carat Weight **0.29 CARAT**
 Color Grade **FANCY VIVID PINK**
 Clarity Grade **VS 1**
 Polish **VERY GOOD**
 Symmetry **GOOD**
 Fluorescence **SLIGHT**
 Inscription(s) **IGI LG786698935**

Comments: This Laboratory Grown
 Diamond was created by
 Chemical Vapor Deposition (CVD)
 growth process. Indications of
 post-growth treatment.



THIS DOCUMENT WAS PRODUCED WITH THE FOLLOWING SECURITY MEASURES: SPECIAL DOCUMENT PAPER, INK SCREENS, WATERMARK, BACKGROUND DESIGNS, HOLOGRAM AND OTHER SECURITY FEATURES NOT LISTED AND DO EXCEED DOCUMENT SECURITY INDUSTRY GUIDELINES.