



April 1, 2026

IGI Report Number LG786698868
ROUND BRILLIANT
LABORATORY GROWN DIAMOND
4.37 - 4.40 X 2.69 MM

Carat Weight 0.32 CARAT
Color Grade FANCY INTENSE PINK
Clarity Grade VVS 2
Cut Grade VERY GOOD
Polish VERY GOOD
Symmetry VERY GOOD
Fluorescence SLIGHT
Inscription(s) IGI LG786698868

Comments: This Laboratory Grown Diamond was created by Chemical Vapor Deposition (CVD) growth process. Indications of post-growth treatment.

LABORATORY GROWN DIAMOND REPORT

April 1, 2026
IGI Report Number **LG786698868**
Description **LABORATORY GROWN DIAMOND**
Shape and Cutting Style **ROUND BRILLIANT**
Measurements **4.37 - 4.40 X 2.69 MM**

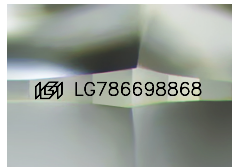
GRADING RESULTS

Carat Weight 0.32 CARAT
Color Grade FANCY INTENSE PINK
Clarity Grade VVS 2
Cut Grade VERY GOOD

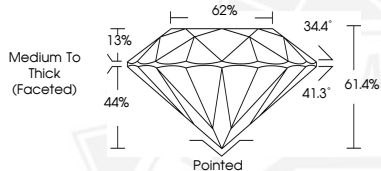
ADDITIONAL GRADING INFORMATION

Polish VERY GOOD
Symmetry VERY GOOD
Fluorescence SLIGHT
Inscription(s) IGI LG786698868

Comments: This Laboratory Grown Diamond was created by Chemical Vapor Deposition (CVD) growth process. Indications of post-growth treatment.



Sample Image Used



April 1, 2026

IGI Report Number LG786698868
ROUND BRILLIANT
LABORATORY GROWN DIAMOND
4.37 - 4.40 X 2.69 MM

Carat Weight 0.32 CARAT
Color Grade FANCY INTENSE PINK
Clarity Grade VVS 2
Cut Grade VERY GOOD
Polish VERY GOOD
Symmetry VERY GOOD
Fluorescence SLIGHT
Inscription(s) IGI LG786698868

Comments: This Laboratory Grown Diamond was created by Chemical Vapor Deposition (CVD) growth process. Indications of post-growth treatment.

THIS DOCUMENT WAS PRODUCED WITH THE FOLLOWING SECURITY MEASURES: SPECIAL DOCUMENT PAPER, INK SCREENS, WATERMARK, BACKGROUND DESIGNS, HOLOGRAM AND OTHER SECURITY FEATURES NOT LISTED AND DO EXCEED DOCUMENT SECURITY INDUSTRY GUIDELINES.