



ELECTRONIC COPY

LG786697711
Report verification at igi.org



April 1, 2026

IGI Report Number **LG786697711**

Description **LABORATORY GROWN DIAMOND**

Shape and Cutting Style **EMERALD CUT**

Measurements **9.71 X 6.92 X 4.62 MM**

GRADING RESULTS

Carat Weight **3.01 CARATS**

Color Grade **FANCY LIGHT BLUE GREEN**

Clarity Grade **VS 1**

April 1, 2026
IGI Report Number **LG786697711**
Description **LABORATORY GROWN DIAMOND**
Shape and Cutting Style **EMERALD CUT**
Measurements **9.71 X 6.92 X 4.62 MM**

GRADING RESULTS

Carat Weight **3.01 CARATS**

Color Grade **FANCY LIGHT BLUE GREEN**

Clarity Grade **VS 1**

ADDITIONAL GRADING INFORMATION

Polish **EXCELLENT**

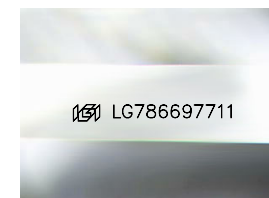
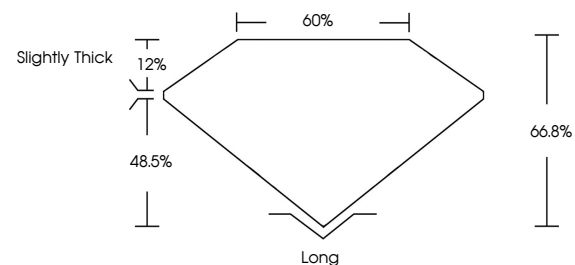
Symmetry **EXCELLENT**

Fluorescence **NONE**

Inscription(s) **LG786697711**

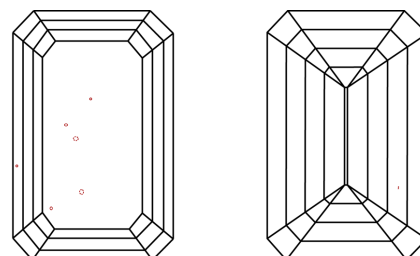
Comments: This Laboratory Grown Diamond was created by Chemical Vapor Deposition (CVD) growth process.
Indications of post-growth treatment.

PROPORTIONS



Sample Image Used

CLARITY CHARACTERISTICS



KEY TO SYMBOLS

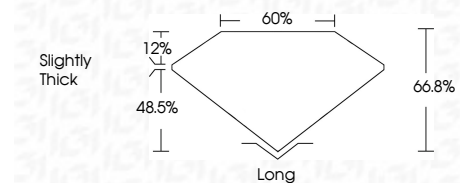
Red symbols indicate internal characteristics.
Green symbols indicate external characteristics.

COLOR

D E F G H I J Faint Very Light Light

CLARITY

FL	IF	VS ¹⁻²	VS ¹⁻²	SI ¹⁻²	I ¹⁻³
Flawless	Internally Flawless	Very Very Slightly Included	Very Slightly Included	Slightly Included	Included



ADDITIONAL GRADING INFORMATION

Polish **EXCELLENT**

Symmetry **EXCELLENT**

Fluorescence **NONE**

Inscription(s) **LG786697711**

Comments: This Laboratory Grown Diamond was created by Chemical Vapor Deposition (CVD) growth process.
Indications of post-growth treatment.



IGI



April 1, 2026
IGI Report No **LG786697711**
EMERALD CUT

3.01 CARATS
Carat Weight
FANCY LIGHT BLUE GREEN
Color Grade
VS 1
Clarity Grade
66.8%
Table
05%
Girdle
Slightly Thick

Long
Culet
EXCELLENT
Polish
EXCELLENT
Symmetry
NONE
Fluorescence
IGI LG786697711
Inscription(s)

Comments: This Laboratory Grown Diamond was created by Chemical Vapor Deposition (CVD) growth process.
Indications of post-growth treatment.