



ELECTRONIC COPY

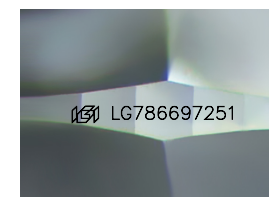
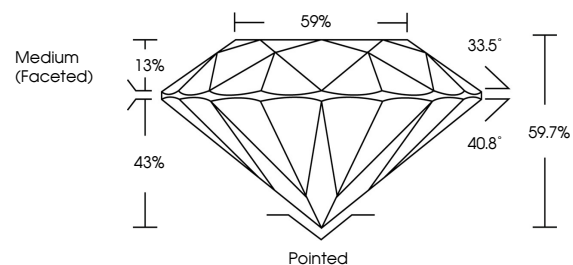
LG786697251
Report verification at igi.org



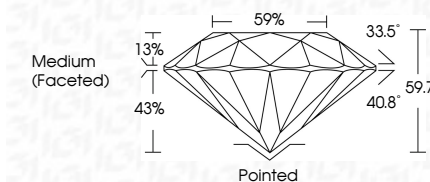
March 30, 2026
IGI Report Number **LG786697251**
Description **LABORATORY GROWN DIAMOND**
Shape and Cutting Style **ROUND BRILLIANT**
Measurements **6.55 - 6.58 X 3.92 MM**
GRADING RESULTS
Carat Weight **1.03 CARAT**
Color Grade **F**
Clarity Grade **VS 1**
Cut Grade **IDEAL**

March 30, 2026
IGI Report Number **LG786697251**
Description **LABORATORY GROWN DIAMOND**
Shape and Cutting Style **ROUND BRILLIANT**
Measurements **6.55 - 6.58 X 3.92 MM**
GRADING RESULTS
Carat Weight **1.03 CARAT**
Color Grade **F**
Clarity Grade **VS 1**
Cut Grade **IDEAL**

PROPORTIONS



Sample Image Used



ADDITIONAL GRADING INFORMATION
Polish **EXCELLENT**
Symmetry **EXCELLENT**
Fluorescence **NONE**
Inscription(s) **IGI LG786697251**
Comments: This Laboratory Grown Diamond was created by Chemical Vapor Deposition (CVD) growth process. Type IIa

COLOR

D E F G H I J Faint Very Light Light

CLARITY

FL	IF	VS ¹⁻²	VS ¹⁻²	SI ¹⁻²	I ¹⁻³
Flawless	Internally Flawless	Very Very Slightly Included	Very Slightly Included	Slightly Included	Included

ADDITIONAL GRADING INFORMATION

Polish **EXCELLENT**
Symmetry **EXCELLENT**
Fluorescence **NONE**
Inscription(s) **IGI LG786697251**
Comments: This Laboratory Grown Diamond was created by Chemical Vapor Deposition (CVD) growth process. Type IIa



IGI



March 30, 2026
IGI Report No **LG786697251**
ROUND BRILLIANT
6.55 - 6.58 X 3.92 MM
Carat Weight **1.03 CARAT**
Color Grade **F**
Clarity Grade **VS 1**
Cut Grade **IDEAL**
Depth **59.7%**
Table **59%**
Girdle **Medium (Faceted)**
Culet **Pointed**
Polish **EXCELLENT**
Symmetry **EXCELLENT**
Fluorescence **NONE**
Inscription(s) **IGI LG786697251**
Comments: This Laboratory Grown Diamond was created by Chemical Vapor Deposition (CVD) growth process. Type IIa