



April 1, 2026

**IGI Report Number LG786694052**  
**MARQUISE BRILLIANT**  
**LABORATORY GROWN DIAMOND**  
**8.23 X 3.82 X 2.29 MM**

Carat Weight	<b>0.42 CARAT</b>
Color Grade	<b>FANCY VIVID BLUE</b>
Clarity Grade	<b>VS 2</b>
Polish	<b>VERY GOOD</b>
Symmetry	<b>VERY GOOD</b>
Fluorescence	<b>NONE</b>
Inscription(s)	<b>IGI LG786694052</b>

Comments: This Laboratory Grown Diamond was created by Chemical Vapor Deposition (CVD) growth process. Indications of post-growth treatment.  
Secondary color: Green

**LABORATORY GROWN DIAMOND REPORT**

April 1, 2026  
IGI Report Number **LG786694052**  
Description **LABORATORY GROWN DIAMOND**  
Shape and Cutting Style **MARQUISE BRILLIANT**  
Measurements **8.23 X 3.82 X 2.29 MM**

**GRADING RESULTS**

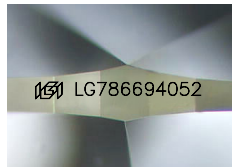
Carat Weight **0.42 CARAT**  
Color Grade **FANCY VIVID BLUE**  
Clarity Grade **VS 2**

**ADDITIONAL GRADING INFORMATION**

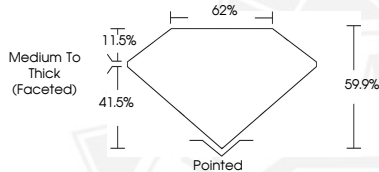
Polish **VERY GOOD**  
Symmetry **VERY GOOD**  
Fluorescence **NONE**  
Inscription(s) **IGI LG786694052**

Comments: This Laboratory Grown Diamond was created by Chemical Vapor Deposition (CVD) growth process.  
Indications of post-growth treatment.

Secondary color: Green



Sample Image Used



April 1, 2026

**IGI Report Number LG786694052**  
**MARQUISE BRILLIANT**  
**LABORATORY GROWN DIAMOND**  
**8.23 X 3.82 X 2.29 MM**

Carat Weight	<b>0.42 CARAT</b>
Color Grade	<b>FANCY VIVID BLUE</b>
Clarity Grade	<b>VS 2</b>
Polish	<b>VERY GOOD</b>
Symmetry	<b>VERY GOOD</b>
Fluorescence	<b>NONE</b>
Inscription(s)	<b>IGI LG786694052</b>

Comments: This Laboratory Grown Diamond was created by Chemical Vapor Deposition (CVD) growth process. Indications of post-growth treatment.  
Secondary color: Green



THIS DOCUMENT WAS PRODUCED WITH THE FOLLOWING SECURITY MEASURES: SPECIAL DOCUMENT PAPER, INK SCREENS, WATERMARK, BACKGROUND DESIGNS, HOLOGRAM AND OTHER SECURITY FEATURES NOT LISTED AND DO EXCEED DOCUMENT SECURITY INDUSTRY GUIDELINES.