



ELECTRONIC COPY

LG786692766
Report verification at igi.org



April 1, 2026
IGI Report Number **LG786692766**
Description **LABORATORY GROWN DIAMOND**
Shape and Cutting Style **SQUARE CUSHION MODIFIED BRILLIANT**
Measurements **5.80 X 5.58 X 3.96 MM**
GRADING RESULTS
Carat Weight **1.00 CARAT**
Color Grade **FANCY VIVID BLUE**
Clarity Grade **VS 1**

LABORATORY GROWN DIAMOND REPORT

April 1, 2026
IGI Report Number **LG786692766**
Description **LABORATORY GROWN DIAMOND**
Shape and Cutting Style **SQUARE CUSHION MODIFIED BRILLIANT**
Measurements **5.80 X 5.58 X 3.96 MM**

GRADING RESULTS

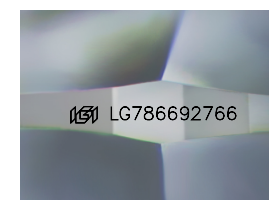
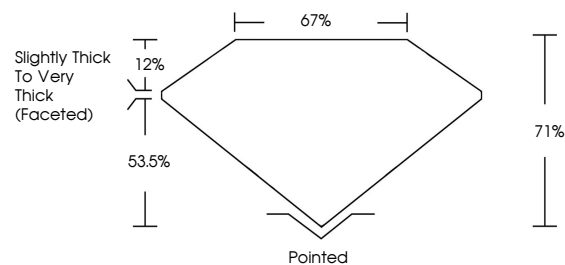
Carat Weight **1.00 CARAT**
Color Grade **FANCY VIVID BLUE**
Clarity Grade **VS 1**

ADDITIONAL GRADING INFORMATION

Polish **EXCELLENT**
Symmetry **EXCELLENT**
Fluorescence **NONE**
Inscription(s) **IGI LG786692766**

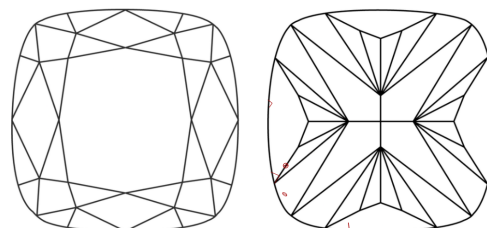
Comments: This Laboratory Grown Diamond was created by Chemical Vapor Deposition (CVD) growth process.
Indications of post-growth treatment.

PROPORTIONS



Sample Image Used

CLARITY CHARACTERISTICS



KEY TO SYMBOLS

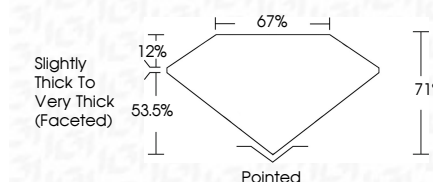
Red symbols indicate internal characteristics.
Green symbols indicate external characteristics.

COLOR

D E F G H I J Faint Very Light Light

CLARITY

FL	IF	VS ¹⁻²	VS ¹⁻²	SI ¹⁻²	I ¹⁻³
Flawless	Internally Flawless	Very Very Slightly Included	Very Slightly Included	Slightly Included	Included



ADDITIONAL GRADING INFORMATION

Polish **EXCELLENT**
Symmetry **EXCELLENT**
Fluorescence **NONE**
Inscription(s) **IGI LG786692766**
Comments: This Laboratory Grown Diamond was created by Chemical Vapor Deposition (CVD) growth process.
Indications of post-growth treatment.



IGI



April 1, 2026
IGI Report No **LG786692766**
SQUARE CUSHION MODIFIED BRILLIANT
5.80 X 5.58 X 3.96 MM
Carat Weight **1.00 CARAT**
Color Grade **FANCY VIVID BLUE**
Clarity Grade **VS 1**
Depth **71%**
Table **67%**
Girdle **Slightly Thick To Very Thick (Faceted)**
Culet **Pointed**
Polish **EXCELLENT**
Symmetry **EXCELLENT**
Fluorescence **NONE**
Inscription(s) **IGI LG786692766**

Comments: This Laboratory Grown Diamond was created by Chemical Vapor Deposition (CVD) growth process.
Indications of post-growth treatment.