



ELECTRONIC COPY

LG786692710
Report verification at igi.org



April 1, 2026

IGI Report Number **LG786692710**

Description **LABORATORY GROWN DIAMOND**

Shape and Cutting Style **PRINCESS CUT**

Measurements **6.91 X 6.72 X 4.75 MM**

GRADING RESULTS

Carat Weight **2.01 CARATS**

Color Grade **FANCY VIVID PINK**

Clarity Grade **VVS 2**

April 1, 2026
IGI Report Number **LG786692710**
Description **LABORATORY GROWN DIAMOND**
Shape and Cutting Style **PRINCESS CUT**
Measurements **6.91 X 6.72 X 4.75 MM**

GRADING RESULTS

Carat Weight **2.01 CARATS**

Color Grade **FANCY VIVID PINK**

Clarity Grade **VVS 2**

ADDITIONAL GRADING INFORMATION

Polish **VERY GOOD**

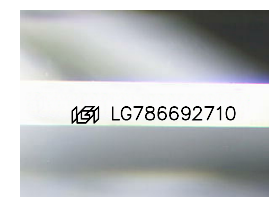
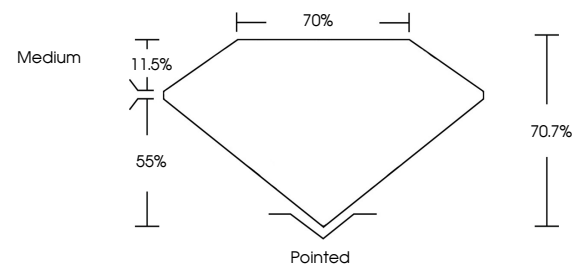
Symmetry **EXCELLENT**

Fluorescence **SLIGHT**

Inscription(s) **IGI LG786692710**

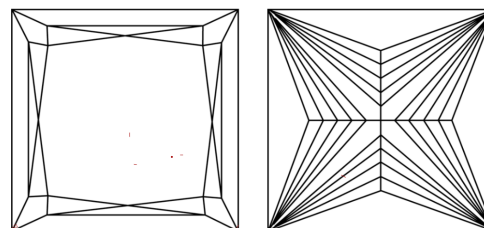
Comments: This Laboratory Grown Diamond was created by Chemical Vapor Deposition (CVD) growth process. Indications of post-growth treatment.

PROPORTIONS



Sample Image Used

CLARITY CHARACTERISTICS



KEY TO SYMBOLS

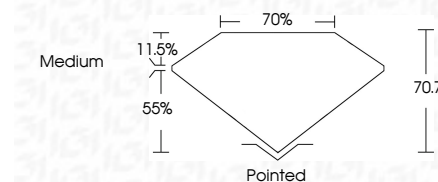
Red symbols indicate internal characteristics.
Green symbols indicate external characteristics.

COLOR

D E F G H I J Faint Very Light Light

CLARITY

FL	IF	VVS ¹⁻²	VS ¹⁻²	SI ¹⁻²	I ¹⁻³
Flawless	Internally Flawless	Very Very Slightly Included	Very Slightly Included	Slightly Included	Included



ADDITIONAL GRADING INFORMATION

Polish **VERY GOOD**

Symmetry **EXCELLENT**

Fluorescence **SLIGHT**

Inscription(s) **IGI LG786692710**

Comments: This Laboratory Grown Diamond was created by Chemical Vapor Deposition (CVD) growth process. Indications of post-growth treatment.



April 1, 2026
IGI Report No **LG786692710**
PRINCESS CUT

2.01 CARATS
Carat Weight
FANCY VIVID PINK
Color Grade

VVS 2
Clarity Grade
70.7%
Depth
70%
Table
Medium
Girdle

Pointed
Culet
VERY GOOD
Polish
EXCELLENT
Symmetry
SLIGHT
Fluorescence
Inscription(s)
IGI LG786692710

Comments: This Laboratory Grown Diamond was created by Chemical Vapor Deposition (CVD) growth process. Indications of post-growth treatment.