



ELECTRONIC COPY

LG786692709
Report verification at igi.org



April 1, 2026

IGI Report Number **LG786692709**

Description **LABORATORY GROWN DIAMOND**

Shape and Cutting Style **PRINCESS CUT**

Measurements **6.89 X 6.83 X 4.89 MM**

GRADING RESULTS

Carat Weight **2.05 CARATS**

Color Grade **FANCY VIVID PINK**

Clarity Grade **VS 1**

April 1, 2026
IGI Report Number **LG786692709**
Description **LABORATORY GROWN DIAMOND**
Shape and Cutting Style **PRINCESS CUT**
Measurements **6.89 X 6.83 X 4.89 MM**

GRADING RESULTS

Carat Weight **2.05 CARATS**

Color Grade **FANCY VIVID PINK**

Clarity Grade **VS 1**

ADDITIONAL GRADING INFORMATION

Polish **EXCELLENT**

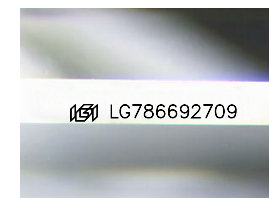
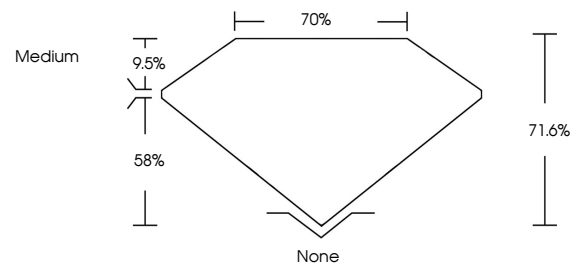
Symmetry **EXCELLENT**

Fluorescence **SLIGHT**

Inscription(s) **IGI LG786692709**

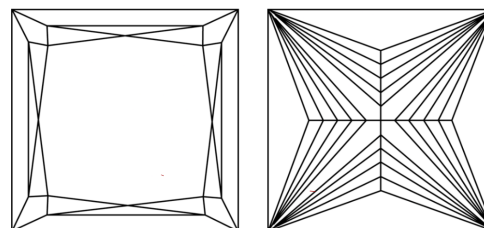
Comments: This Laboratory Grown Diamond was created by Chemical Vapor Deposition (CVD) growth process. Indications of post-growth treatment.

PROPORTIONS



Sample Image Used

CLARITY CHARACTERISTICS



KEY TO SYMBOLS

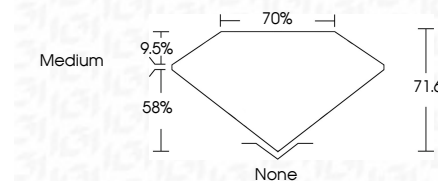
Red symbols indicate internal characteristics.
Green symbols indicate external characteristics.

COLOR

D E F G H I J Faint Very Light Light

CLARITY

| FL | IF | VS ¹⁻² | VS ¹⁻² | SI ¹⁻² | I ¹⁻³ |
|----------|---------------------|-----------------------------|------------------------|-------------------|------------------|
| Flawless | Internally Flawless | Very Very Slightly Included | Very Slightly Included | Slightly Included | Included |



ADDITIONAL GRADING INFORMATION

Polish **EXCELLENT**

Symmetry **EXCELLENT**

Fluorescence **SLIGHT**

Inscription(s) **IGI LG786692709**

Comments: This Laboratory Grown Diamond was created by Chemical Vapor Deposition (CVD) growth process. Indications of post-growth treatment.



IGI



April 1, 2026
IGI Report No **LG786692709**
PRINCESS CUT

2.05 CARATS
Carat Weight
FANCY VIVID PINK
Color Grade

VS 1
Clarity Grade

71.6%
Depth

70%
Table

Medium
Girdle

None
Culet

EXCELLENT
Polish

EXCELLENT
Symmetry

SLIGHT
Fluorescence

IGI LG786692709
Inscription(s)

Comments: This Laboratory Grown Diamond was created by Chemical Vapor Deposition (CVD) growth process. Indications of post-growth treatment.