



ELECTRONIC COPY

LG786689838 Report verification at igi.org



March 30, 2026 IGI Report Number LG786689838 Description LABORATORY GROWN DIAMOND Shape and Cutting Style CUSHION MODIFIED BRILLIANT Measurements 10.11 X 7.54 X 5.03 MM GRADING RESULTS Carat Weight 3.04 CARATS Color Grade G Clarity Grade VVS 2

LABORATORY GROWN DIAMOND REPORT

March 30, 2026 IGI Report Number LG786689838 Description LABORATORY GROWN DIAMOND Shape and Cutting Style CUSHION MODIFIED BRILLIANT Measurements 10.11 X 7.54 X 5.03 MM

GRADING RESULTS

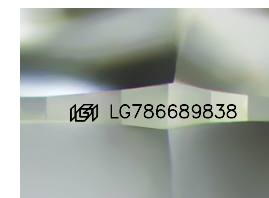
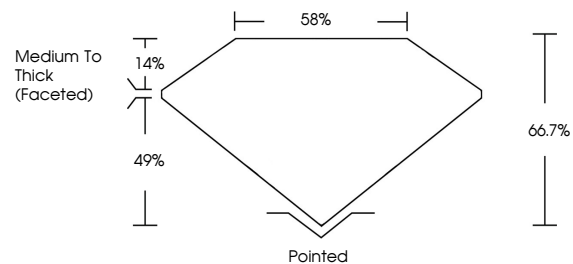
Carat Weight 3.04 CARATS Color Grade G Clarity Grade VVS 2

ADDITIONAL GRADING INFORMATION

Polish EXCELLENT Symmetry EXCELLENT Fluorescence NONE Inscription(s) IGI LG786689838

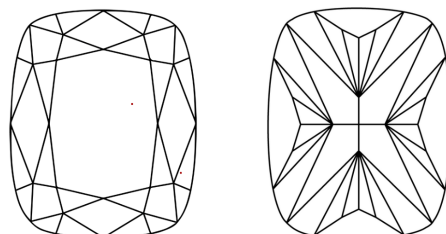
Comments: This Laboratory Grown Diamond was created by Chemical Vapor Deposition (CVD) growth process. Type IIa

PROPORTIONS



Sample Image Used

CLARITY CHARACTERISTICS



KEY TO SYMBOLS

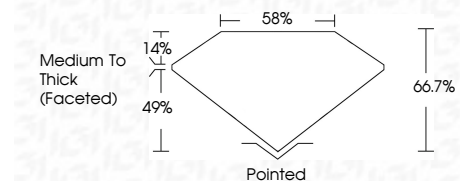
Red symbols indicate internal characteristics. Green symbols indicate external characteristics.

COLOR

D E F G H I J Faint Very Light Light

CLARITY

FL IF VVS 1-2 VS 1-2 SI 1-2 I 1-3 Flawless Internally Flawless Very Very Slightly Included Very Slightly Included Slightly Included Included



ADDITIONAL GRADING INFORMATION

Polish EXCELLENT Symmetry EXCELLENT Fluorescence NONE Inscription(s) IGI LG786689838 Comments: This Laboratory Grown Diamond was created by Chemical Vapor Deposition (CVD) growth process. Type IIa



March 30, 2026 IGI Report No LG786689838 CUSHION MODIFIED BRILLIANT 10.11 X 7.54 X 5.03 MM 3.04 CARATS G VVS 2 66.7% 49% Medium To Thick (Faceted) Pointed EXCELLENT EXCELLENT NONE NONE IGI LG786689838 Comments: This Laboratory Grown Diamond was created by Chemical Vapor Deposition (CVD) growth process. Type IIa