



**ELECTRONIC COPY**

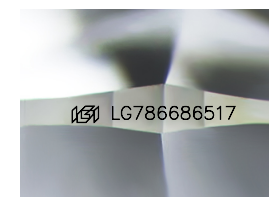
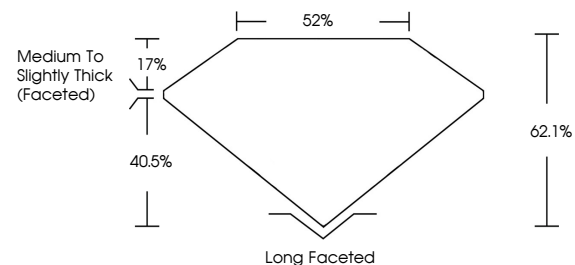
LG786686517  
Report verification at igi.org



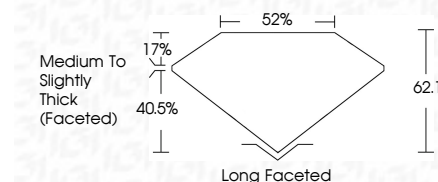
March 27, 2026  
IGI Report Number **LG786686517**  
Description **LABORATORY GROWN DIAMOND**  
Shape and Cutting Style **CUSHION MODIFIED BRILLIANT**  
Measurements **11.94 X 8.86 X 5.50 MM**  
**GRADING RESULTS**  
Carat Weight **4.47 CARATS**  
Color Grade **E**  
Clarity Grade **VVS 1**

March 27, 2026  
IGI Report Number **LG786686517**  
Description **LABORATORY GROWN DIAMOND**  
Shape and Cutting Style **CUSHION MODIFIED BRILLIANT**  
Measurements **11.94 X 8.86 X 5.50 MM**  
**GRADING RESULTS**  
Carat Weight **4.47 CARATS**  
Color Grade **E**  
Clarity Grade **VVS 1**

**PROPORTIONS**



Sample Image Used



**ADDITIONAL GRADING INFORMATION**

Polish **EXCELLENT**  
Symmetry **EXCELLENT**  
Fluorescence **NONE**  
Inscription(s) **IGI LG786686517**

Comments: This Laboratory Grown Diamond was created by Chemical Vapor Deposition (CVD) growth process. Type IIa

**ADDITIONAL GRADING INFORMATION**

Polish **EXCELLENT**  
Symmetry **EXCELLENT**  
Fluorescence **NONE**  
Inscription(s) **IGI LG786686517**  
Comments: This Laboratory Grown Diamond was created by Chemical Vapor Deposition (CVD) growth process. Type IIa

**COLOR**

D E F G H I J Faint Very Light Light

**CLARITY**

FL	IF	VS <sup>1-2</sup>	VS <sup>1-2</sup>	SI <sup>1-2</sup>	I <sup>1-3</sup>
Flawless	Internally Flawless	Very Very Slightly Included	Very Slightly Included	Slightly Included	Included



**IGI**



March 27, 2026  
IGI Report No **LG786686517**  
**CUSHION MODIFIED BRILLIANT**  
**11.94 X 8.86 X 5.50 MM**  
**4.47 CARATS**  
**E**  
Carat Weight  
Color Grade  
Clarity Grade **VVS 1**  
Depth **62.1%**  
Table **52%**  
Girdle  
Medium to Slightly Thick (Faceted)  
Culet Long Faceted  
Polish **EXCELLENT**  
Symmetry **EXCELLENT**  
Fluorescence **NONE**  
Inscription(s) **IGI LG786686517**

Comments: This Laboratory Grown Diamond was created by Chemical Vapor Deposition (CVD) growth process. Type IIa