



ELECTRONIC COPY

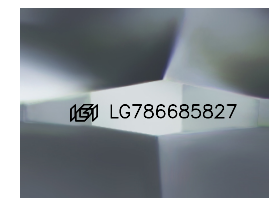
LG786685827
Report verification at igi.org



April 7, 2026
IGI Report Number **LG786685827**
Description **LABORATORY GROWN DIAMOND**
Shape and Cutting Style **SQUARE CUSHION MODIFIED BRILLIANT**

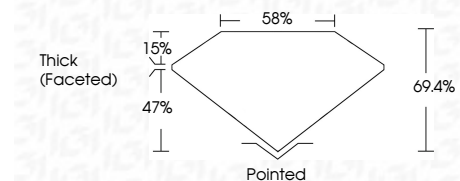
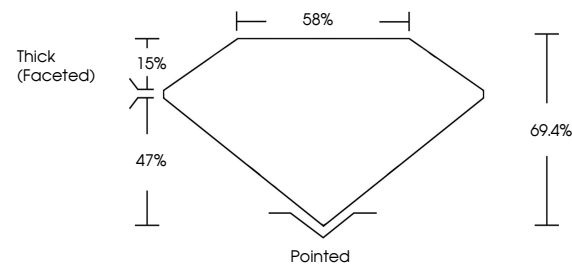
Measurements **5.94 X 5.88 X 4.08 MM**

GRADING RESULTS
Carat Weight **1.36 CARAT**
Color Grade **FANCY VIVID YELLOW**
Clarity Grade **VS 1**

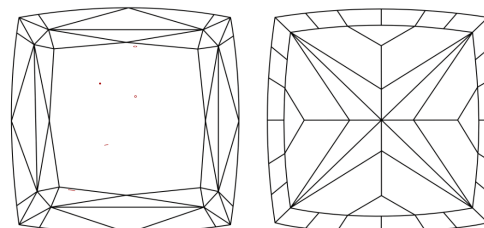


Sample Image Used

PROPORTIONS



CLARITY CHARACTERISTICS



KEY TO SYMBOLS

Red symbols indicate internal characteristics.
Green symbols indicate external characteristics.

COLOR

D E F G H I J Faint Very Light Light

CLARITY

| FL | IF | VS ¹⁻² | VS ¹⁻² | SI ¹⁻² | I ¹⁻³ |
|----------|---------------------|-----------------------------|------------------------|-------------------|------------------|
| Flawless | Internally Flawless | Very Very Slightly Included | Very Slightly Included | Slightly Included | Included |

ADDITIONAL GRADING INFORMATION

Polish **EXCELLENT**
Symmetry **EXCELLENT**
Fluorescence **NONE**
Inscription(s) **(IGI) LG786685827**
Comments: This Laboratory Grown Diamond was created by Chemical Vapor Deposition (CVD) growth process.



IGI



April 7, 2026
IGI Report No. **LG786685827**
SQUARE CUSHION MODIFIED BRILLIANT
5.94 X 5.88 X 4.08 MM
1.36 CARAT
FANCY VIVID YELLOW
VS 1
69.4%
58%
Thick (Faceted)
Pointed
EXCELLENT
EXCELLENT
NONE
None
(IGI) LG786685827
Comments: This Laboratory Grown Diamond was created by Chemical Vapor Deposition (CVD) growth process.