



ELECTRONIC COPY

LG786685817 Report verification at igi.org



April 6, 2026 IGI Report Number LG786685817 Description LABORATORY GROWN DIAMOND Shape and Cutting Style SQUARE CUSHION MODIFIED BRILLIANT

Measurements 5.76 X 5.70 X 3.84 MM

GRADING RESULTS

Carat Weight 1.23 CARAT Color Grade FANCY VIVID YELLOW Clarity Grade VVS 2

April 6, 2026 IGI Report Number LG786685817 Description LABORATORY GROWN DIAMOND Shape and Cutting Style SQUARE CUSHION MODIFIED BRILLIANT Measurements 5.76 X 5.70 X 3.84 MM

GRADING RESULTS

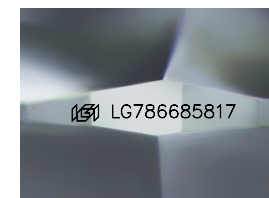
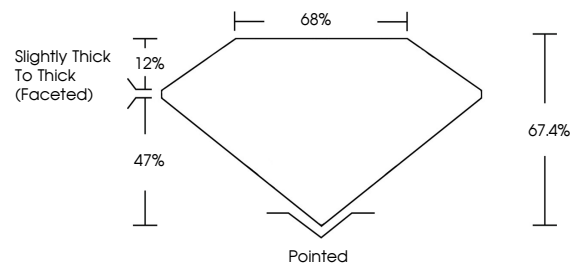
Carat Weight 1.23 CARAT Color Grade FANCY VIVID YELLOW Clarity Grade VVS 2

ADDITIONAL GRADING INFORMATION

Polish EXCELLENT Symmetry EXCELLENT Fluorescence NONE Inscription(s) LG786685817

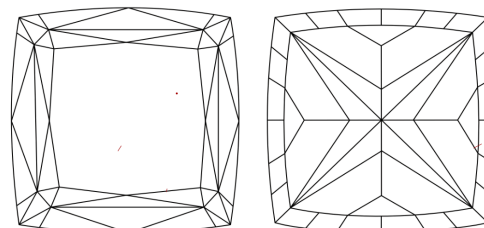
Comments: This Laboratory Grown Diamond was created by Chemical Vapor Deposition (CVD) growth process.

PROPORTIONS



Sample Image Used

CLARITY CHARACTERISTICS



KEY TO SYMBOLS

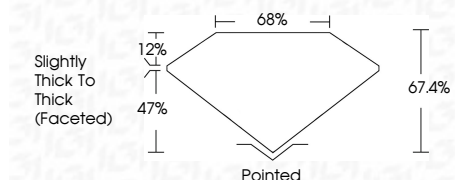
Red symbols indicate internal characteristics. Green symbols indicate external characteristics.

COLOR

D E F G H I J Faint Very Light Light

CLARITY

FL IF VVS 1-2 VS 1-2 SI 1-2 I 1-3 Flawless Internally Flawless Very Very Slightly Included Very Slightly Included Slightly Included Included



ADDITIONAL GRADING INFORMATION

Polish EXCELLENT Symmetry EXCELLENT Fluorescence NONE Inscription(s) LG786685817 Comments: This Laboratory Grown Diamond was created by Chemical Vapor Deposition (CVD) growth process.



IGI



April 6, 2026 IGI Report No LG786685817 SQUARE CUSHION MODIFIED BRILLIANT 1.23 CARAT 5.76 X 5.70 X 3.84 MM FANCY VIVID YELLOW VVS 2 67.4% 68% Slightly Thick To Thick (Faceted) Pointed EXCELLENT EXCELLENT NONE NONE LG786685817 Comments: This Laboratory Grown Diamond was created by Chemical Vapor Deposition (CVD) growth process.