



ELECTRONIC COPY

LG786685636
Report verification at igi.org



April 2, 2026
IGI Report Number **LG786685636**
Description **LABORATORY GROWN DIAMOND**
Shape and Cutting Style **CUT CORNERED
RECTANGULAR MIXED CUT**
Measurements **9.52 X 6.79 X 4.68 MM**
GRADING RESULTS
Carat Weight **3.06 CARATS**
Color Grade **D**
Clarity Grade **VS 1**

LABORATORY GROWN DIAMOND REPORT

April 2, 2026
IGI Report Number **LG786685636**
Description **LABORATORY GROWN DIAMOND**
Shape and Cutting Style **CUT CORNERED RECTANGULAR
MIXED CUT**
Measurements **9.52 X 6.79 X 4.68 MM**

GRADING RESULTS

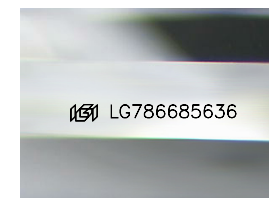
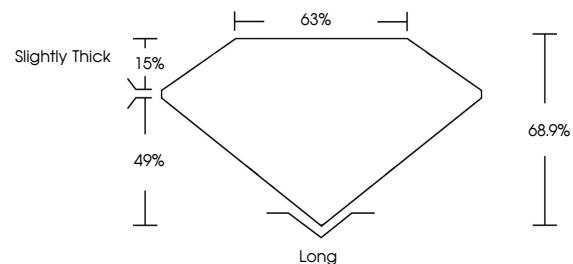
Carat Weight **3.06 CARATS**
Color Grade **D**
Clarity Grade **VS 1**

ADDITIONAL GRADING INFORMATION

Polish **EXCELLENT**
Symmetry **EXCELLENT**
Fluorescence **NONE**
Inscription(s) **IGI LG786685636**

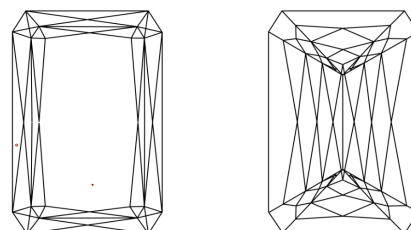
Comments: This Laboratory Grown Diamond was created by Chemical Vapor Deposition (CVD) growth process.
Type IIa

PROPORTIONS



Sample Image Used

CLARITY CHARACTERISTICS



KEY TO SYMBOLS

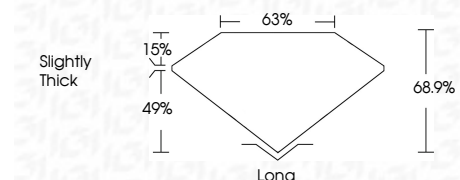
Red symbols indicate internal characteristics.
Green symbols indicate external characteristics.

COLOR

D E F G H I J Faint Very Light Light

CLARITY

FL	IF	VS ¹⁻²	VS ¹⁻²	SI ¹⁻²	I ¹⁻³
Flawless	Internally Flawless	Very Very Slightly Included	Very Slightly Included	Slightly Included	Included



ADDITIONAL GRADING INFORMATION

Polish **EXCELLENT**
Symmetry **EXCELLENT**
Fluorescence **NONE**
Inscription(s) **IGI LG786685636**
Comments: This Laboratory Grown Diamond was created by Chemical Vapor Deposition (CVD) growth process.
Type IIa



April 2, 2026
IGI Report No LG786685636
CUT CORNERED RECT. MIXED CUT
9.52 X 6.79 X 4.68 MM
3.06 CARATS
D
VS 1
68.9%
63%
Slightly Thick
Long
EXCELLENT
EXCELLENT
NONE
IGI LG786685636
Comments: This Laboratory Grown Diamond was created by Chemical Vapor Deposition (CVD) growth process.
Type IIa