



ELECTRONIC COPY

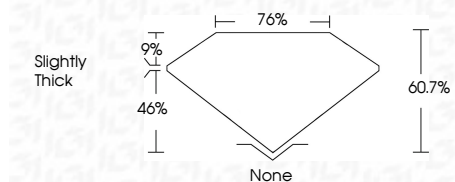
LG786685289
Report verification at igi.org



April 3, 2026
IGI Report Number **LG786685289**
Description **LABORATORY GROWN DIAMOND**
Shape and Cutting Style **HEXAGONAL STEP CUT**
Measurements **10.87 X 6.66 X 4.04 MM**

GRADING RESULTS

Carat Weight **2.07 CARATS**
Color Grade **E**
Clarity Grade **VVS 1**



ADDITIONAL GRADING INFORMATION

Polish **EXCELLENT**
Symmetry **EXCELLENT**
Fluorescence **NONE**
Inscription(s) **IGI LG786685289**
Comments: This Laboratory Grown Diamond was created by Chemical Vapor Deposition (CVD) growth process. Type IIa



April 3, 2026
IGI Report No **LG786685289**
HEXAGONAL STEP CUT
10.87 X 6.66 X 4.04 MM
Carat Weight **2.07 CARATS**
Color Grade **E**
Clarity Grade **VVS 1**
Depth **60.7%**
Table **76%**
Girdle **Slightly Thick**
Culet **None**
Polish **EXCELLENT**
Symmetry **EXCELLENT**
Fluorescence **NONE**
Inscription(s) **IGI LG786685289**
Comments: This Laboratory Grown Diamond was created by Chemical Vapor Deposition (CVD) growth process. Type IIa

April 3, 2026
IGI Report Number **LG786685289**
Description **LABORATORY GROWN DIAMOND**
Shape and Cutting Style **HEXAGONAL STEP CUT**
Measurements **10.87 X 6.66 X 4.04 MM**

GRADING RESULTS

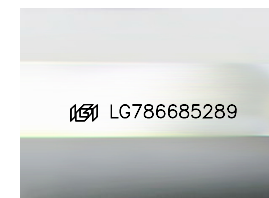
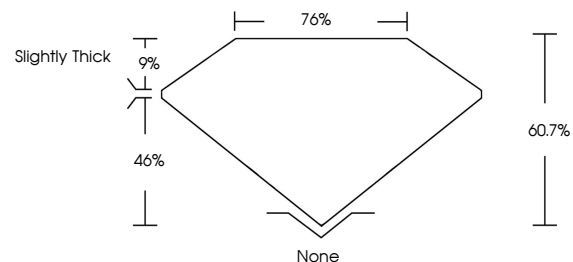
Carat Weight **2.07 CARATS**
Color Grade **E**
Clarity Grade **VVS 1**

ADDITIONAL GRADING INFORMATION

Polish **EXCELLENT**
Symmetry **EXCELLENT**
Fluorescence **NONE**
Inscription(s) **IGI LG786685289**

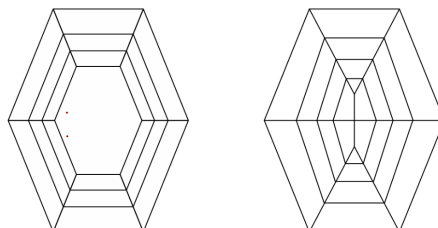
Comments: This Laboratory Grown Diamond was created by Chemical Vapor Deposition (CVD) growth process. Type IIa

PROPORTIONS



Sample Image Used

CLARITY CHARACTERISTICS



KEY TO SYMBOLS

Red symbols indicate internal characteristics.
Green symbols indicate external characteristics.

COLOR

D E F G H I J Faint Very Light Light

CLARITY

FL	IF	VVS ¹⁻²	VS ¹⁻²	SI ¹⁻²	I ¹⁻³
Flawless	Internally Flawless	Very Very Slightly Included	Very Slightly Included	Slightly Included	Included

