



ELECTRONIC COPY

LG786685069 Report verification at igi.org



March 28, 2026 IGI Report Number LG786685069 Description LABORATORY GROWN DIAMOND Shape and Cutting Style CUT CORNERED RECTANGULAR MODIFIED BRILLIANT Measurements 11.54 X 7.77 X 5.34 MM GRADING RESULTS Carat Weight 4.05 CARATS Color Grade D Clarity Grade VVS 2

March 28, 2026 IGI Report Number LG786685069 Description LABORATORY GROWN DIAMOND Shape and Cutting Style CUT CORNERED RECTANGULAR MODIFIED BRILLIANT Measurements 11.54 X 7.77 X 5.34 MM

GRADING RESULTS

Carat Weight 4.05 CARATS Color Grade D Clarity Grade VVS 2

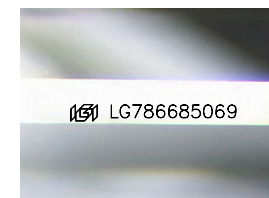
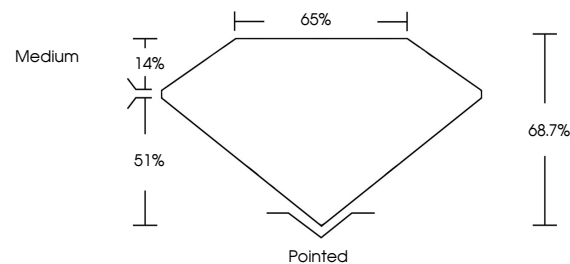
ADDITIONAL GRADING INFORMATION

Polish EXCELLENT Symmetry EXCELLENT Fluorescence NONE

Inscription(s) IGI LG786685069

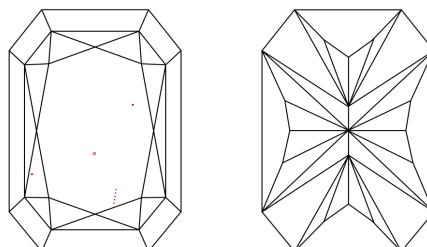
Comments: This Laboratory Grown Diamond was created by Chemical Vapor Deposition (CVD) growth process. Type IIa

PROPORTIONS



Sample Image Used

CLARITY CHARACTERISTICS



KEY TO SYMBOLS

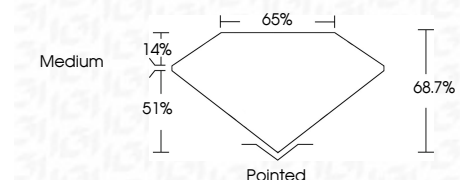
Red symbols indicate internal characteristics. Green symbols indicate external characteristics.

COLOR

D E F G H I J Faint Very Light Light

CLARITY

FL IF VVS 1-2 VS 1-2 SI 1-2 I 1-3 Flawless Internally Flawless Very Very Slightly Included Very Slightly Included Slightly Included Included



ADDITIONAL GRADING INFORMATION

Polish EXCELLENT Symmetry EXCELLENT Fluorescence NONE Inscription(s) IGI LG786685069 Comments: This Laboratory Grown Diamond was created by Chemical Vapor Deposition (CVD) growth process. Type IIa



March 28, 2026 IGI Report No LG786685069 CUT CORNERED RECT. MODIFIED BRILLIANT 4.05 CARATS D VVS 2 68.7% 65% Medium Pointed EXCELLENT EXCELLENT NONE IGI LG786685069 Comments: This Laboratory Grown Diamond was created by Chemical Vapor Deposition (CVD) growth process. Type IIa