



**ELECTRONIC COPY**

LG786683807  
Report verification at [igi.org](http://igi.org)



March 27, 2026

IGI Report Number **LG786683807**

Description **LABORATORY GROWN DIAMOND**

Shape and Cutting Style **ROUND BRILLIANT**

Measurements **6.43 - 6.46 X 3.91 MM**

**GRADING RESULTS**

Carat Weight **1.01 CARAT**

Color Grade **F**

Clarity Grade **VVS 2**

Cut Grade **IDEAL**

March 27, 2026

IGI Report Number **LG786683807**

Description **LABORATORY GROWN DIAMOND**

Shape and Cutting Style **ROUND BRILLIANT**

Measurements **6.43 - 6.46 X 3.91 MM**

**GRADING RESULTS**

Carat Weight **1.01 CARAT**

Color Grade **F**

Clarity Grade **VVS 2**

Cut Grade **IDEAL**

**ADDITIONAL GRADING INFORMATION**

Polish **EXCELLENT**

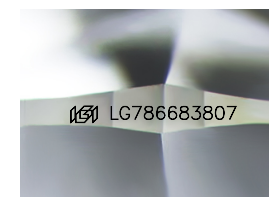
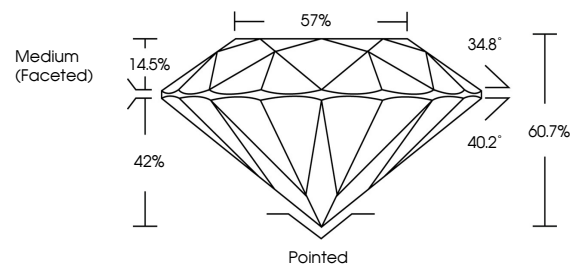
Symmetry **EXCELLENT**

Fluorescence **NONE**

Inscription(s) **LG786683807**

Comments: This Laboratory Grown Diamond was created by Chemical Vapor Deposition (CVD) growth process.  
Type IIa

**PROPORTIONS**



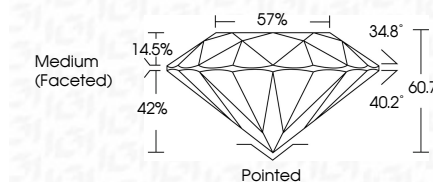
Sample Image Used

**COLOR**

D E F G H I J Faint Very Light Light

**CLARITY**

FL	IF	VVS <sup>1-2</sup>	VS <sup>1-2</sup>	SI <sup>1-2</sup>	I <sup>1-3</sup>
Flawless	Internally Flawless	Very Very Slightly Included	Very Slightly Included	Slightly Included	Included



**ADDITIONAL GRADING INFORMATION**

Polish **EXCELLENT**

Symmetry **EXCELLENT**

Fluorescence **NONE**

Inscription(s) **LG786683807**

Comments: This Laboratory Grown Diamond was created by Chemical Vapor Deposition (CVD) growth process.  
Type IIa



**IGI**



March 27, 2026  
IGI Report No LG786683807  
ROUND BRILLIANT

1.01 CARAT  
F

6.43 - 6.46 X 3.91 MM  
VVS 2  
IDEAL  
60.7%  
57%  
Medium (Faceted)

Pointed  
EXCELLENT  
EXCELLENT  
NONE  
IGI LG786683807

Comments: This Laboratory Grown Diamond was created by Chemical Vapor Deposition (CVD) growth process.  
Type IIa