



ELECTRONIC COPY

LG786682956
Report verification at igi.org



March 31, 2026
IGI Report Number **LG786682956**
Description **LABORATORY GROWN DIAMOND**
Shape and Cutting Style **CUSHION MODIFIED BRILLIANT**
Measurements **7.05 X 5.05 X 3.55 MM**
GRADING RESULTS
Carat Weight **1.01 CARAT**
Color Grade **FANCY PINK**
Clarity Grade **VS 1**

March 31, 2026
IGI Report Number **LG786682956**
Description **LABORATORY GROWN DIAMOND**
Shape and Cutting Style **CUSHION MODIFIED BRILLIANT**
Measurements **7.05 X 5.05 X 3.55 MM**

GRADING RESULTS

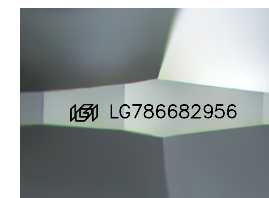
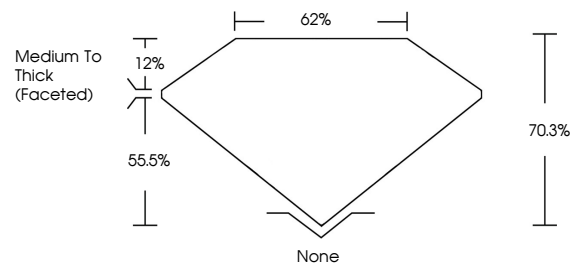
Carat Weight **1.01 CARAT**
Color Grade **FANCY PINK**
Clarity Grade **VS 1**

ADDITIONAL GRADING INFORMATION

Polish **VERY GOOD**
Symmetry **VERY GOOD**
Fluorescence **SLIGHT**
Inscription(s) **LG786682956**

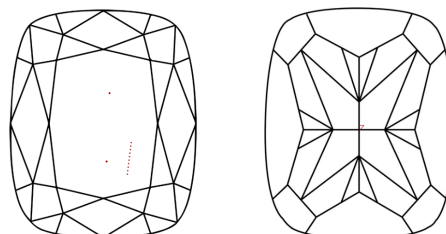
Comments: This Laboratory Grown Diamond was created by Chemical Vapor Deposition (CVD) growth process.
Indications of post-growth treatment.

PROPORTIONS



Sample Image Used

CLARITY CHARACTERISTICS



KEY TO SYMBOLS

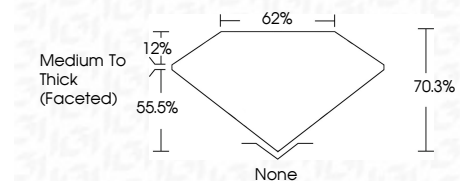
Red symbols indicate internal characteristics.
Green symbols indicate external characteristics.

COLOR

D E F G H I J Faint Very Light Light

CLARITY

FL	IF	VS ¹⁻²	VS ¹⁻²	SI ¹⁻²	I ¹⁻³
Flawless	Internally Flawless	Very Very Slightly Included	Very Slightly Included	Slightly Included	Included



ADDITIONAL GRADING INFORMATION

Polish **VERY GOOD**
Symmetry **VERY GOOD**
Fluorescence **SLIGHT**
Inscription(s) **LG786682956**
Comments: This Laboratory Grown Diamond was created by Chemical Vapor Deposition (CVD) growth process.
Indications of post-growth treatment.



March 31, 2026
IGI Report No **LG786682956**
CUSHION MODIFIED BRILLIANT
1.01 CARAT
FANCY PINK
VS 1
7.05 X 5.05 X 3.55 MM
Color Grade
Fancy Pink
Clarity Grade
VS 1
70.3%
62%
Medium To Thick (Faceted)
None
Polish
VERY GOOD
Symmetry
VERY GOOD
Fluorescence
SLIGHT
Inscription(s)
 LG786682956
Comments: This Laboratory Grown Diamond was created by Chemical Vapor Deposition (CVD) growth process.
Indications of post-growth treatment.