



March 28, 2026

**IGI Report Number LG786682583**  
**CUT CORNERED RECTANGULAR  
MODIFIED BRILLIANT**  
**LABORATORY GROWN DIAMOND**  
**6.34 X 4.50 X 3.08 MM**

Carat Weight	<b>0.77 CARAT</b>
Color Grade	<b>D</b>
Clarity Grade	<b>VVS 2</b>
Polish	<b>GOOD</b>
Symmetry	<b>VERY GOOD</b>
Fluorescence	<b>NONE</b>
Inscription(s)	<b>IGI LG786682583</b>

Comments: This Laboratory Grown Diamond was created by Chemical Vapor Deposition (CVD) growth process. Type IIa

**LABORATORY GROWN DIAMOND REPORT**

March 28, 2026

IGI Report Number

**LG786682583**

Description

**LABORATORY GROWN DIAMOND**

Shape and Cutting Style

**CUT CORNERED RECTANGULAR MODIFIED  
BRILLIANT**

Measurements

**6.34 X 4.50 X 3.08 MM**

**GRADING RESULTS**

Carat Weight

**0.77 CARAT**

Color Grade

**D**

Clarity Grade

**VVS 2**

**ADDITIONAL GRADING INFORMATION**

Polish

**GOOD**

Symmetry

**VERY GOOD**

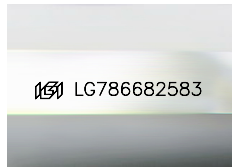
Fluorescence

**NONE**

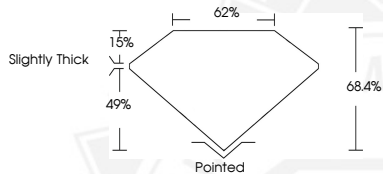
Inscription(s)

**IGI LG786682583**

Comments: This Laboratory Grown Diamond was created by Chemical Vapor Deposition (CVD) growth process. Type IIa



Sample Image Used



March 28, 2026

**IGI Report Number LG786682583**  
**CUT CORNERED RECTANGULAR  
MODIFIED BRILLIANT**  
**LABORATORY GROWN DIAMOND**  
**6.34 X 4.50 X 3.08 MM**

Carat Weight	<b>0.77 CARAT</b>
Color Grade	<b>D</b>
Clarity Grade	<b>VVS 2</b>
Polish	<b>GOOD</b>
Symmetry	<b>VERY GOOD</b>
Fluorescence	<b>NONE</b>
Inscription(s)	<b>IGI LG786682583</b>

Comments: This Laboratory Grown Diamond was created by Chemical Vapor Deposition (CVD) growth process. Type IIa



THIS DOCUMENT WAS PRODUCED WITH THE FOLLOWING SECURITY MEASURES: SPECIAL DOCUMENT PAPER, INK SCREENS, WATERMARK, BACKGROUND DESIGNS, HOLOGRAM AND OTHER SECURITY FEATURES NOT LISTED AND DO EXCEED DOCUMENT SECURITY INDUSTRY GUIDELINES.