



**ELECTRONIC COPY**

LG786682288  
Report verification at igi.org



April 9, 2026  
IGI Report Number **LG786682288**  
Description **LABORATORY GROWN DIAMOND**  
Shape and Cutting Style **CUT CORNERED  
RECTANGULAR MIXED CUT**  
Measurements **8.15 X 6.25 X 4.47 MM**  
**GRADING RESULTS**  
Carat Weight **2.17 CARATS**  
Color Grade **FANCY YELLOW**  
Clarity Grade **VS 1**

April 9, 2026  
IGI Report Number **LG786682288**  
Description **LABORATORY GROWN DIAMOND**  
Shape and Cutting Style **CUT CORNERED RECTANGULAR  
MIXED CUT**  
Measurements **8.15 X 6.25 X 4.47 MM**

**GRADING RESULTS**

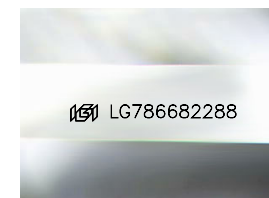
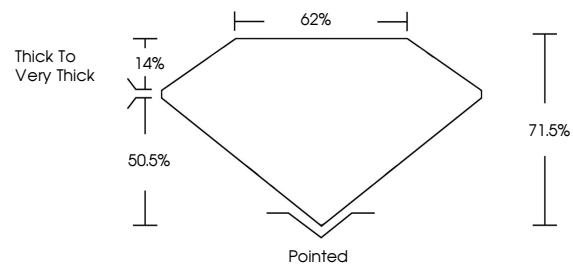
Carat Weight **2.17 CARATS**  
Color Grade **FANCY YELLOW**  
Clarity Grade **VS 1**

**ADDITIONAL GRADING INFORMATION**

Polish **EXCELLENT**  
Symmetry **EXCELLENT**  
Fluorescence **NONE**  
Inscription(s) **IGI LG786682288**

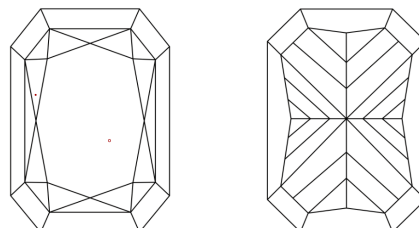
Comments: This Laboratory Grown Diamond was created by Chemical Vapor Deposition (CVD) growth process.

**PROPORTIONS**



Sample Image Used

**CLARITY CHARACTERISTICS**



**KEY TO SYMBOLS**

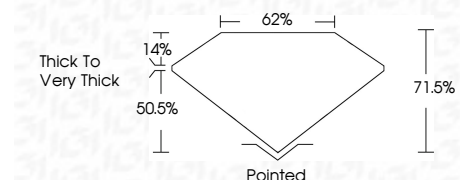
Red symbols indicate internal characteristics.  
Green symbols indicate external characteristics.

**COLOR**

D E F G H I J Faint Very Light Light

**CLARITY**

FL	IF	VS <sup>1-2</sup>	VS <sup>1-2</sup>	SI <sup>1-2</sup>	I <sup>1-3</sup>
Flawless	Internally Flawless	Very Very Slightly Included	Very Slightly Included	Slightly Included	Included



**ADDITIONAL GRADING INFORMATION**

Polish **EXCELLENT**  
Symmetry **EXCELLENT**  
Fluorescence **NONE**  
Inscription(s) **IGI LG786682288**  
Comments: This Laboratory Grown Diamond was created by Chemical Vapor Deposition (CVD) growth process.



**IGI**



April 9, 2026  
IGI Report No LG786682288  
CUT CORNERED RECT. MIXED CUT  
8.15 X 6.25 X 4.47 MM  
2.17 CARATS  
FANCY YELLOW  
VS 1  
71.05%  
62%  
Thick to Very Thick  
Pointed  
EXCELLENT  
EXCELLENT  
NONE  
IGI LG786682288  
Comments: This Laboratory Grown Diamond was created by Chemical Vapor Deposition (CVD) growth process.