



INTERNATIONAL GEMOLOGICAL INSTITUTE

LABORATORY GROWN DIAMOND REPORT

March 27, 2026
 IGI Report Number **LG786677649**
 Description **LABORATORY GROWN DIAMOND**
 Shape and Cutting Style **ROUND BRILLIANT**
 Measurements **4.86 - 4.90 X 2.95 MM**

GRADING RESULTS

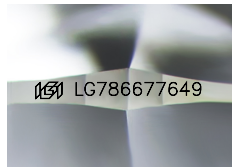
Carat Weight **0.43 CARAT**
 Color Grade **D**
 Clarity Grade **VVS 1**
 Cut Grade **IDEAL**

ADDITIONAL GRADING INFORMATION

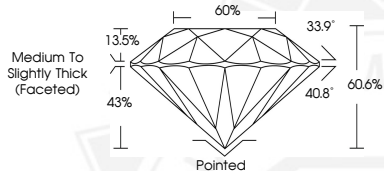
Polish **EXCELLENT**
 Symmetry **EXCELLENT**
 Fluorescence **NONE**
 Inscription(s) **IGI LG786677649**

Comments: As Grown - No indication of post-growth treatment.
 This Laboratory Grown Diamond was created by High Pressure High
 Temperature (HPHT) growth process.
 Type II

ELECTRONIC COPY



Sample Image Used



March 27, 2026

IGI Report Number **LG786677649**
ROUND BRILLIANT
LABORATORY GROWN DIAMOND
4.86 - 4.90 X 2.95 MM
 Carat Weight **0.43 CARAT**
 Color Grade **D**
 Clarity Grade **VVS 1**
 Cut Grade **IDEAL**
 Polish **EXCELLENT**
 Symmetry **EXCELLENT**
 Fluorescence **NONE**
 Inscription(s) **IGI LG786677649**

Comments: As Grown - No
 indication of post-growth
 treatment. This Laboratory Grown
 Diamond was created by High
 Pressure High Temperature (HPHT)
 growth process. Type II



March 27, 2026

IGI Report Number **LG786677649**
ROUND BRILLIANT
LABORATORY GROWN DIAMOND
4.86 - 4.90 X 2.95 MM
 Carat Weight **0.43 CARAT**
 Color Grade **D**
 Clarity Grade **VVS 1**
 Cut Grade **IDEAL**
 Polish **EXCELLENT**
 Symmetry **EXCELLENT**
 Fluorescence **NONE**
 Inscription(s) **IGI LG786677649**

Comments: As Grown - No
 indication of post-growth
 treatment. This Laboratory Grown
 Diamond was created by High
 Pressure High Temperature (HPHT)
 growth process. Type II



THIS DOCUMENT WAS PRODUCED WITH THE FOLLOWING SECURITY MEASURES: SPECIAL DOCUMENT PAPER, INK SCREENS, WATERMARK
 BACKGROUND DESIGNS, HOLOGRAM AND OTHER SECURITY FEATURES NOT LISTED AND DO EXCEED DOCUMENT SECURITY INDUSTRY GUIDELINES.

For terms & conditions and to verify this report, please visit www.igi.org