



ELECTRONIC COPY

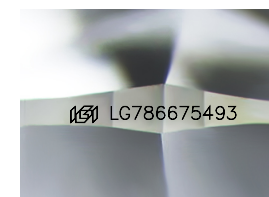
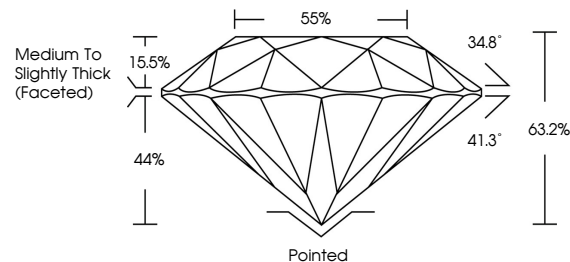
LG786675493
Report verification at igi.org



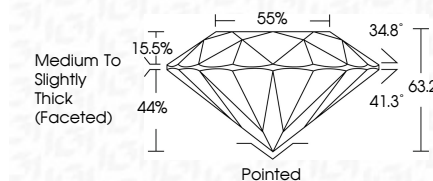
April 2, 2026
IGI Report Number LG786675493
Description LABORATORY GROWN DIAMOND
Shape and Cutting Style ROUND BRILLIANT
Measurements 12.18 - 12.22 X 7.71 MM
GRADING RESULTS
Carat Weight 7.04 CARATS
Color Grade E
Clarity Grade VS 1
Cut Grade EXCELLENT

April 2, 2026
IGI Report Number LG786675493
Description LABORATORY GROWN DIAMOND
Shape and Cutting Style ROUND BRILLIANT
Measurements 12.18 - 12.22 X 7.71 MM
GRADING RESULTS
Carat Weight 7.04 CARATS
Color Grade E
Clarity Grade VS 1
Cut Grade EXCELLENT

PROPORTIONS



Sample Image Used



ADDITIONAL GRADING INFORMATION

Polish EXCELLENT
Symmetry EXCELLENT
Fluorescence NONE
Inscription(s) IGI LG786675493

ADDITIONAL GRADING INFORMATION

Polish EXCELLENT
Symmetry EXCELLENT
Fluorescence NONE
Inscription(s) IGI LG786675493
Comments: This Laboratory Grown Diamond was created by Chemical Vapor Deposition (CVD) growth process. Type IIa

COLOR

D E F G H I J Faint Very Light Light

CLARITY

FL IF VS 1-2 VS 2-3 SI 1-2 I 1-3
Flawless Internally Flawless Very Very Slightly Included Very Slightly Included Slightly Included Included



April 2, 2026
IGI Report No LG786675493
ROUND BRILLIANT
12.18 - 12.22 X 7.71 MM
7.04 CARATS E
Color Grade EXCELLENT
Clarity Grade VS 1
Depth 63.2%
Table 85%
Girdle Medium To Slightly Thick (Faceted)
Culet Pointed
Polish EXCELLENT
Symmetry EXCELLENT
Fluorescence NONE
Inscriptions(s) IGI LG786675493
Comments: This Laboratory Grown Diamond was created by Chemical Vapor Deposition (CVD) growth process. Type IIa