



ELECTRONIC COPY

LG786673889
Report verification at igi.org



March 31, 2026
IGI Report Number **LG786673889**
Description **LABORATORY GROWN DIAMOND**
Shape and Cutting Style **CUT CORNERED
RECTANGULAR MODIFIED
BRILLIANT**
Measurements **10.55 X 7.02 X 4.91 MM**
GRADING RESULTS
Carat Weight **3.50 CARATS**
Color Grade **FANCY INTENSE BLUISH
GREEN**
Clarity Grade **VS 1**

March 31, 2026
IGI Report Number **LG786673889**
Description **LABORATORY GROWN DIAMOND**
Shape and Cutting Style **CUT CORNERED RECTANGULAR
MODIFIED BRILLIANT**
Measurements **10.55 X 7.02 X 4.91 MM**

GRADING RESULTS

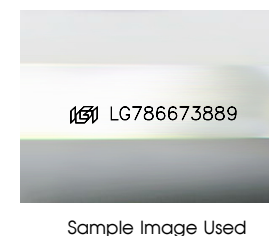
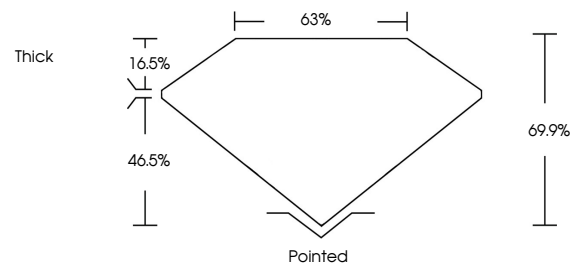
Carat Weight **3.50 CARATS**
Color Grade **FANCY INTENSE BLUISH GREEN**
Clarity Grade **VS 1**

ADDITIONAL GRADING INFORMATION

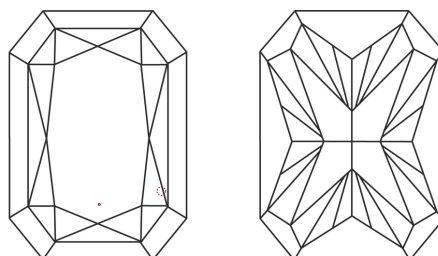
Polish **EXCELLENT**
Symmetry **EXCELLENT**
Fluorescence **NONE**
Inscription(s) **IGI LG786673889**

Comments: This Laboratory Grown Diamond was created by Chemical Vapor Deposition (CVD) growth process.
Indications of post-growth treatment.

PROPORTIONS



CLARITY CHARACTERISTICS



KEY TO SYMBOLS

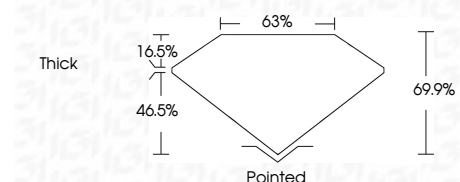
Red symbols indicate internal characteristics.
Green symbols indicate external characteristics.

COLOR

D E F G H I J Faint Very Light Light

CLARITY

FL	IF	VS ¹⁻²	VS ¹⁻²	SI ¹⁻²	I ¹⁻³
Flawless	Internally Flawless	Very Very Slightly Included	Very Slightly Included	Slightly Included	Included



ADDITIONAL GRADING INFORMATION

Polish **EXCELLENT**
Symmetry **EXCELLENT**
Fluorescence **NONE**
Inscription(s) **IGI LG786673889**
Comments: This Laboratory Grown Diamond was created by Chemical Vapor Deposition (CVD) growth process.
Indications of post-growth treatment.



IGI



March 31, 2026
IGI Report No **LG786673889**
CUT CORNERED RECT. MODIFIED BRILLIANT
10.55 X 7.02 X 4.91 MM
Carat Weight **3.50 CARATS**
Color Grade **FANCY INTENSE BLUISH GREEN**
Clarity Grade **VS 1**
Depth **69.9%**
Table **65%**
Girdle **Thick**
Culet **Pointed**
Polish **EXCELLENT**
Symmetry **EXCELLENT**
Fluorescence **NONE**
Inscription(s) **IGI LG786673889**

Comments: This Laboratory Grown Diamond was created by Chemical Vapor Deposition (CVD) growth process.
Indications of post-growth treatment.