



ELECTRONIC COPY

LG786670195
Report verification at igi.org



March 28, 2026

IGI Report Number **LG786670195**

Description **LABORATORY GROWN DIAMOND**

Shape and Cutting Style **PRINCESS CUT**

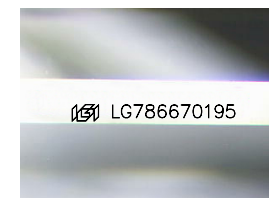
Measurements **6.37 X 6.27 X 4.54 MM**

GRADING RESULTS

Carat Weight **1.58 CARAT**

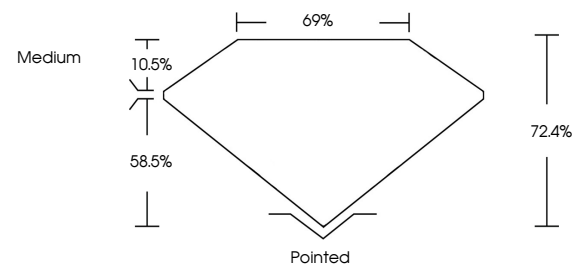
Color Grade **E**

Clarity Grade **VVS 2**

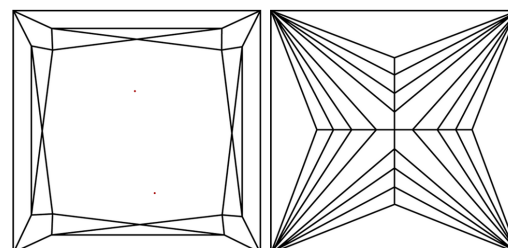


Sample Image Used

PROPORTIONS



CLARITY CHARACTERISTICS



KEY TO SYMBOLS

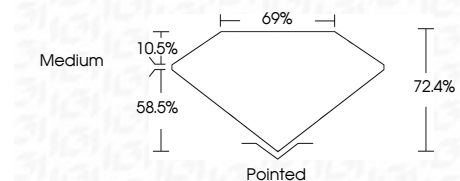
Red symbols indicate internal characteristics.
Green symbols indicate external characteristics.

COLOR

D E F G H I J Faint Very Light Light

CLARITY

FL	IF	VVS ¹⁻²	VS ¹⁻²	SI ¹⁻²	I ¹⁻³
Flawless	Internally Flawless	Very Very Slightly Included	Very Slightly Included	Slightly Included	Included



ADDITIONAL GRADING INFORMATION

Polish **EXCELLENT**

Symmetry **EXCELLENT**

Fluorescence **NONE**

Inscription(s) **IGI LG786670195**

Comments: This Laboratory Grown Diamond was created by Chemical Vapor Deposition (CVD) growth process. Type IIa



IGI



March 28, 2026
IGI Report No LG786670195
PRINCESS CUT

1.58 CARAT
E

6.37 X 6.27 X 4.54 MM

Carat Weight
Color Grade
Clarity Grade
Depth
Table
Girdle
Medium

Pointed
EXCELLENT
EXCELLENT
NONE
IGI LG786670195

Comments: This Laboratory Grown Diamond was created by Chemical Vapor Deposition (CVD) growth process. Type IIa