



**ELECTRONIC COPY**

LG786669881  
Report verification at igi.org



March 31, 2026

IGI Report Number **LG786669881**

Description **LABORATORY GROWN DIAMOND**

Shape and Cutting Style **MODIFIED LOZENGE STEP CUT**

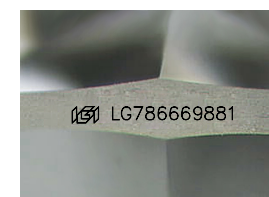
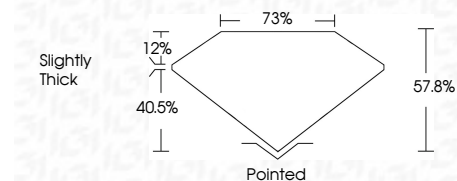
Measurements **14.47 X 8.84 X 5.11 MM**

**GRADING RESULTS**

Carat Weight **5.02 CARATS**

Color Grade **FANCY INTENSE PINK**

Clarity Grade **VVS 2**



Sample Image Used

**ADDITIONAL GRADING INFORMATION**

Polish **EXCELLENT**

Symmetry **EXCELLENT**

Fluorescence **SLIGHT**

Inscription(s) **IGI LG786669881**

Comments: This Laboratory Grown Diamond was created by Chemical Vapor Deposition (CVD) growth process. Indications of post-growth treatment.



March 31, 2026	IGI Report No LG786669881	5.02 CARATS	FANCY INTENSE PINK	VVS 2	57.06%	75%	Slightly Thick	Pointed	EXCELLENT	EXCELLENT	SLIGHT	IGI LG786669881
14.47 X 8.84 X 5.11 MM	MODIFIED LOZENGE STEP CUT	Carat Weight	Color Grade	Clarity Grade	Depth	Table	Graile	Culet	Polish	Symmetry	Fluorescence	Inscription(s)

Comments: This Laboratory Grown Diamond was created by Chemical Vapor Deposition (CVD) growth process. Indications of post-growth treatment.

**LABORATORY GROWN DIAMOND REPORT**

March 31, 2026

IGI Report Number **LG786669881**

Description **LABORATORY GROWN DIAMOND**

Shape and Cutting Style **MODIFIED LOZENGE STEP CUT**

Measurements **14.47 X 8.84 X 5.11 MM**

**GRADING RESULTS**

Carat Weight **5.02 CARATS**

Color Grade **FANCY INTENSE PINK**

Clarity Grade **VVS 2**

**ADDITIONAL GRADING INFORMATION**

Polish **EXCELLENT**

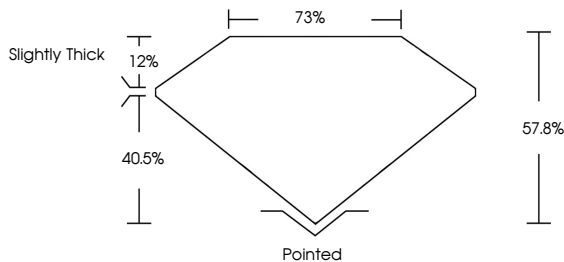
Symmetry **EXCELLENT**

Fluorescence **SLIGHT**

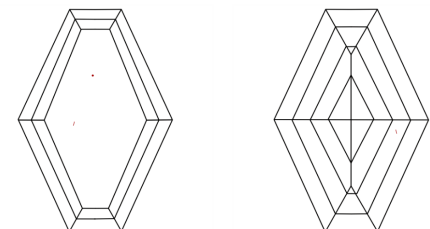
Inscription(s) **IGI LG786669881**

Comments: This Laboratory Grown Diamond was created by Chemical Vapor Deposition (CVD) growth process. Indications of post-growth treatment.

**PROPORTIONS**



**CLARITY CHARACTERISTICS**



**KEY TO SYMBOLS**

Red symbols indicate internal characteristics.  
Green symbols indicate external characteristics.

**COLOR**

D	E	F	G	H	I	J	Faint	Very Light	Light
---	---	---	---	---	---	---	-------	------------	-------

**CLARITY**

FL	IF	VVS <sup>1-2</sup>	VS <sup>1-2</sup>	SI <sup>1-2</sup>	I <sup>1-3</sup>
Flawless	Internally Flawless	Very Very Slightly Included	Very Slightly Included	Slightly Included	Included



March 31, 2026  
IGI Report No LG786669881  
MODIFIED LOZENGE STEP CUT  
14.47 X 8.84 X 5.11 MM  
5.02 CARATS  
FANCY INTENSE PINK  
VVS 2  
57.06%  
75%  
Slightly Thick  
Pointed  
EXCELLENT  
EXCELLENT  
SLIGHT  
IGI LG786669881

Comments: This Laboratory Grown Diamond was created by Chemical Vapor Deposition (CVD) growth process. Indications of post-growth treatment.