



Light Performance Grade: Exceptional



March 27, 2026
IGI Report Number LG786669049
Description LABORATORY GROWN DIAMOND
Shape and Cutting Style ROUND BRILLIANT
Measurements 7.55 - 7.58 X 4.62 MM
GRADING RESULTS
Carat Weight 1.61 CARAT
Color Grade E
Clarity Grade VVS 1
Cut Grade IDEAL

ELECTRONIC COPY LABORATORY GROWN DIAMOND REPORT

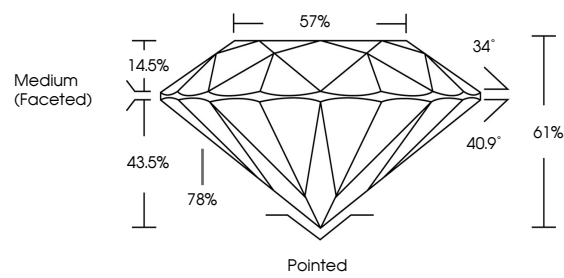
March 27, 2026
IGI Report Number LG786669049
Description LABORATORY GROWN DIAMOND
Shape and Cutting Style ROUND BRILLIANT
Measurements 7.55 - 7.58 x 4.62 mm

GRADING RESULTS
Carat Weight 1.61 CARAT
Color Grade E
Clarity Grade VVS 1
Cut Grade IDEAL

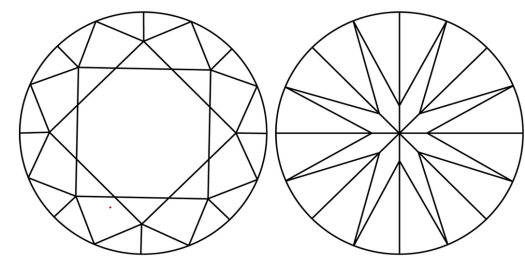
ADDITIONAL GRADING INFORMATION
Polish EXCELLENT
Symmetry EXCELLENT
Fluorescence NONE
Inscription(s) IGI LG786669049

Comments: This Laboratory Grown Diamond was created by Chemical Vapor Deposition (CVD) growth process. Type IIa

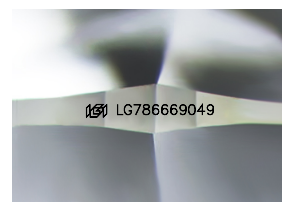
PROPORTIONS



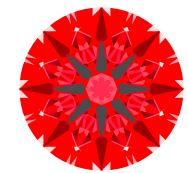
CLARITY CHARACTERISTICS



KEY TO SYMBOLS
Red symbols indicate internal characteristics.
Green symbols indicate external characteristics.



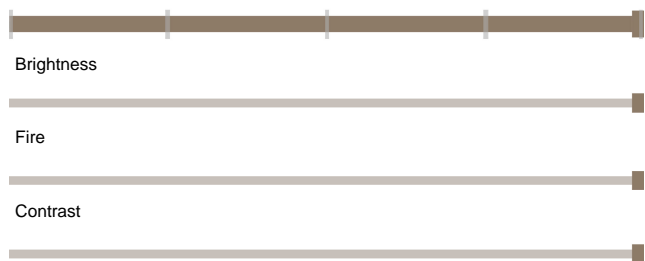
Sample Image Used



Structured Light Environment Representation

Moderate High Superior Exceptional

Light Performance

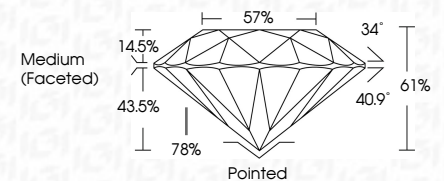


COLOR

D E F G H I J Faint Very Light Light

CLARITY

Table with columns: FL, IF, VS 1-2, VS 1-2, SI 1-2, I 1-3 and rows: Flawless, Internally Flawless, Very Very Slightly Included, Very Slightly Included, Slightly Included, Included



ADDITIONAL GRADING INFORMATION
Polish EXCELLENT
Symmetry EXCELLENT
Fluorescence NONE
Inscription(s) IGI LG786669049
Comments: This Laboratory Grown Diamond was created by Chemical Vapor Deposition (CVD) growth process. Type IIa



March 27, 2026
IGI Report No LG786669049
ROUND BRILLIANT
7.55 - 7.58 X 4.62 MM
Carat Weight 1.61 CARAT
Color Grade E
Clarity Grade VVS 1
Cut Grade IDEAL
Depth 61%
Table 57%
Girdle Medium (Faceted)
Culet Pointed
Polish EXCELLENT
Symmetry EXCELLENT
Fluorescence NONE
Inscription(s) IGI LG786669049
Comments: This Laboratory Grown Diamond was created by Chemical Vapor Deposition (CVD) growth process. Type IIa

