



March 28, 2026

IGI Report Number **LG786665497**

**EMERALD CUT  
LABORATORY GROWN DIAMOND**

**4.75 X 3.44 X 2.27 MM**

Carat Weight **0.35 CARAT**  
Color Grade **D**  
Clarity Grade **VS 2**  
Polish **EXCELLENT**  
Symmetry **EXCELLENT**  
Fluorescence **NONE**  
Inscription(s) **IGI LG786665497**

Comments: This Laboratory Grown Diamond was created by Chemical Vapor Deposition (CVD) growth process. Type IIa

**LABORATORY GROWN DIAMOND REPORT**

March 28, 2026

IGI Report Number

**LG786665497**

Description

**LABORATORY GROWN DIAMOND**

Shape and Cutting Style

**EMERALD CUT**

Measurements

**4.75 X 3.44 X 2.27 MM**

**GRADING RESULTS**

Carat Weight

**0.35 CARAT**

Color Grade

**D**

Clarity Grade

**VS 2**

**ADDITIONAL GRADING INFORMATION**

Polish

**EXCELLENT**

Symmetry

**EXCELLENT**

Fluorescence

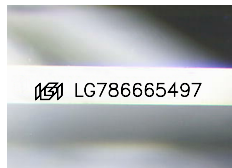
**NONE**

Inscription(s)

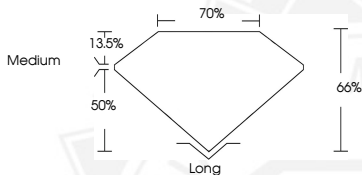
**IGI LG786665497**

Comments: This Laboratory Grown Diamond was created by Chemical Vapor Deposition (CVD) growth process.

Type IIa



Sample Image Used



March 28, 2026

IGI Report Number **LG786665497**

**EMERALD CUT  
LABORATORY GROWN DIAMOND**

**4.75 X 3.44 X 2.27 MM**

Carat Weight **0.35 CARAT**  
Color Grade **D**  
Clarity Grade **VS 2**  
Polish **EXCELLENT**  
Symmetry **EXCELLENT**  
Fluorescence **NONE**  
Inscription(s) **IGI LG786665497**

Comments: This Laboratory Grown Diamond was created by Chemical Vapor Deposition (CVD) growth process. Type IIa



THIS DOCUMENT WAS PRODUCED WITH THE FOLLOWING SECURITY MEASURES: SPECIAL DOCUMENT PAPER, INK SCREENS, WATERMARK, BACKGROUND DESIGNS, HOLOGRAM AND OTHER SECURITY FEATURES NOT LISTED AND DO EXCEED DOCUMENT SECURITY INDUSTRY GUIDELINES.