



LABORATORY GROWN DIAMOND REPORT

March 28, 2026
 IGI Report Number **LG786665417**
 Description **LABORATORY GROWN DIAMOND**
 Shape and Cutting Style **HEXAGONAL MODIFIED STEP CUT**
 Measurements **6.02 X 3.61 X 1.94 MM**

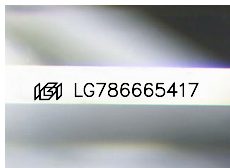
GRADING RESULTS

Carat Weight **0.33 CARAT**
 Color Grade **E**
 Clarity Grade **VVS 1**

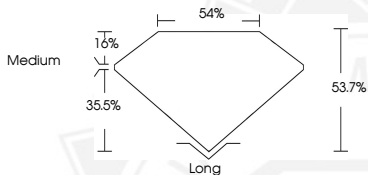
ADDITIONAL GRADING INFORMATION

Polish **VERY GOOD**
 Symmetry **VERY GOOD**
 Fluorescence **NONE**
 Inscription(s) **IGI LG786665417**

Comments: This Laboratory Grown Diamond was created by Chemical Vapor Deposition (CVD) growth process. Type IIa



Sample Image Used



March 28, 2026
 IGI Report Number **LG786665417**
 HEXAGONAL MODIFIED STEP CUT
 LABORATORY GROWN DIAMOND
 6.02 X 3.61 X 1.94 MM
 Carat Weight **0.33 CARAT**
 Color Grade **E**
 Clarity Grade **VVS 1**
 Polish **VERY GOOD**
 Symmetry **VERY GOOD**
 Fluorescence **NONE**
 Inscription(s) **IGI LG786665417**
 Comments: This Laboratory Grown Diamond was created by Chemical Vapor Deposition (CVD) growth process. Type IIa



March 28, 2026
 IGI Report Number **LG786665417**
 HEXAGONAL MODIFIED STEP CUT
 LABORATORY GROWN DIAMOND
 6.02 X 3.61 X 1.94 MM
 Carat Weight **0.33 CARAT**
 Color Grade **E**
 Clarity Grade **VVS 1**
 Polish **VERY GOOD**
 Symmetry **VERY GOOD**
 Fluorescence **NONE**
 Inscription(s) **IGI LG786665417**
 Comments: This Laboratory Grown Diamond was created by Chemical Vapor Deposition (CVD) growth process. Type IIa

THIS DOCUMENT WAS PRODUCED WITH THE FOLLOWING SECURITY MEASURES: SPECIAL DOCUMENT PAPER, INK SCREENS, WATERMARK, BACKGROUND DESIGNS, HOLOGRAM AND OTHER SECURITY FEATURES NOT LISTED AND DO EXCEED DOCUMENT SECURITY INDUSTRY GUIDELINES.