



ELECTRONIC COPY

LG786665365
Report verification at igi.org



April 9, 2026

IGI Report Number **LG786665365**

Description **LABORATORY GROWN DIAMOND**

Shape and Cutting Style **EMERALD CUT**

Measurements **8.98 X 6.41 X 4.29 MM**

GRADING RESULTS

Carat Weight **2.54 CARATS**

Color Grade **FANCY VIVID PINK**

Clarity Grade **VVS 2**

April 9, 2026
IGI Report Number **LG786665365**
Description **LABORATORY GROWN DIAMOND**
Shape and Cutting Style **EMERALD CUT**
Measurements **8.98 X 6.41 X 4.29 MM**

GRADING RESULTS

Carat Weight **2.54 CARATS**

Color Grade **FANCY VIVID PINK**

Clarity Grade **VVS 2**

ADDITIONAL GRADING INFORMATION

Polish **EXCELLENT**

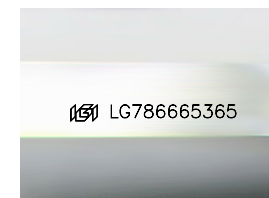
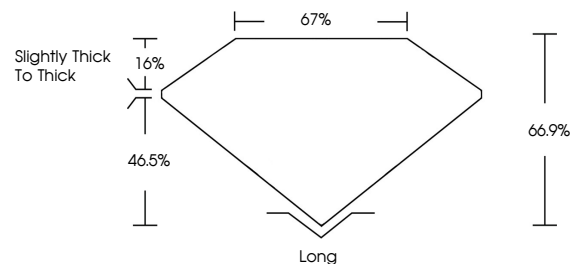
Symmetry **EXCELLENT**

Fluorescence **SLIGHT**

Inscription(s) **LG786665365**

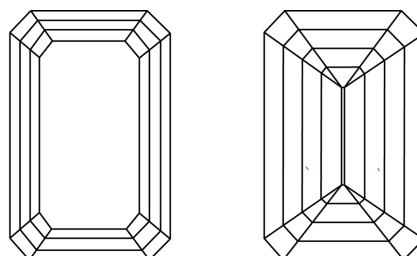
Comments: This Laboratory Grown Diamond was created by Chemical Vapor Deposition (CVD) growth process. Indications of post-growth treatment.

PROPORTIONS



Sample Image Used

CLARITY CHARACTERISTICS



KEY TO SYMBOLS

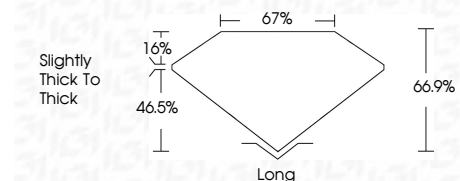
Red symbols indicate internal characteristics.
Green symbols indicate external characteristics.

COLOR

D E F G H I J Faint Very Light Light

CLARITY

FL	IF	VVS ¹⁻²	VS ¹⁻²	SI ¹⁻²	I ¹⁻³
Flawless	Internally Flawless	Very Very Slightly Included	Very Slightly Included	Slightly Included	Included



ADDITIONAL GRADING INFORMATION

Polish **EXCELLENT**

Symmetry **EXCELLENT**

Fluorescence **SLIGHT**

Inscription(s) **LG786665365**

Comments: This Laboratory Grown Diamond was created by Chemical Vapor Deposition (CVD) growth process. Indications of post-growth treatment.



IGI



April 9, 2026	IGI Report No LG786665365	2.54 CARATS	Long
EMERALD CUT	8.98 X 6.41 X 4.29 MM	FANCY VIVID PINK	EXCELLENT
Carat Weight	Color Grade	VVS 2	EXCELLENT
Color Grade	Clarity Grade	66.9%	SLIGHT
Depth	Table	67%	Inscription(s)
Graile	Slightly thick to thick		LG786665365
Culet			
Polish	Symmetry		
Fluorescence	Inscription(s)		

Comments: This Laboratory Grown Diamond was created by Chemical Vapor Deposition (CVD) growth process. Indications of post-growth treatment.