



ELECTRONIC COPY

LG786663692
Report verification at igi.org



March 28, 2026

IGI Report Number **LG786663692**

Description **LABORATORY GROWN DIAMOND**

Shape and Cutting Style **ROUND BRILLIANT**

Measurements **7.41 - 7.43 X 4.44 MM**

GRADING RESULTS

Carat Weight **1.50 CARAT**

Color Grade **F**

Clarity Grade **VVS 2**

Cut Grade **IDEAL**

March 28, 2026
IGI Report Number **LG786663692**
Description **LABORATORY GROWN DIAMOND**
Shape and Cutting Style **ROUND BRILLIANT**
Measurements **7.41 - 7.43 X 4.44 MM**

GRADING RESULTS

Carat Weight **1.50 CARAT**

Color Grade **F**

Clarity Grade **VVS 2**

Cut Grade **IDEAL**

ADDITIONAL GRADING INFORMATION

Polish **EXCELLENT**

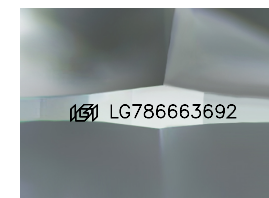
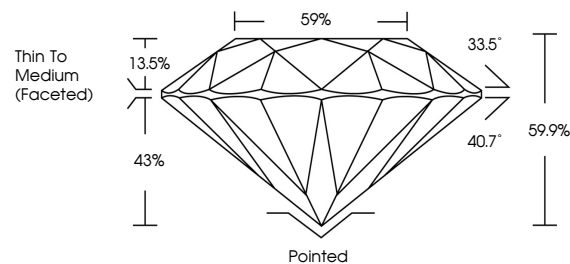
Symmetry **EXCELLENT**

Fluorescence **NONE**

Inscription(s) **LG786663692**

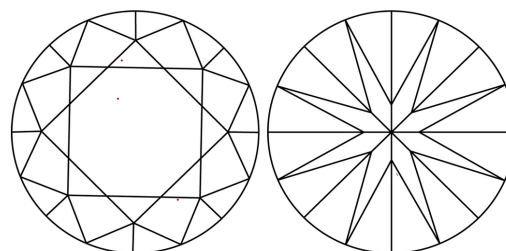
Comments: This Laboratory Grown Diamond was created by Chemical Vapor Deposition (CVD) growth process.
Type IIa

PROPORTIONS



Sample Image Used

CLARITY CHARACTERISTICS



KEY TO SYMBOLS

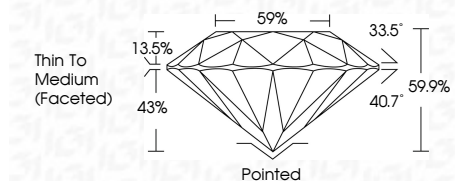
Red symbols indicate internal characteristics.
Green symbols indicate external characteristics.

COLOR

D E F G H I J Faint Very Light Light

CLARITY

| FL | IF | VVS ¹⁻² | VS ¹⁻² | SI ¹⁻² | I ¹⁻³ |
|----------|---------------------|-----------------------------|------------------------|-------------------|------------------|
| Flawless | Internally Flawless | Very Very Slightly Included | Very Slightly Included | Slightly Included | Included |



ADDITIONAL GRADING INFORMATION

Polish **EXCELLENT**

Symmetry **EXCELLENT**

Fluorescence **NONE**

Inscription(s) **LG786663692**

Comments: This Laboratory Grown Diamond was created by Chemical Vapor Deposition (CVD) growth process.
Type IIa



IGI



March 28, 2026
IGI Report No **LG786663692**
ROUND BRILLIANT

1.50 CARAT
F

VVS 2
IDEAL

59.9%
59%

Thin To Medium (Faceted)

Pointed
EXCELLENT
EXCELLENT
NONE
NONE

LG786663692

Comments: This Laboratory Grown Diamond was created by Chemical Vapor Deposition (CVD) growth process.
Type IIa