



ELECTRONIC COPY

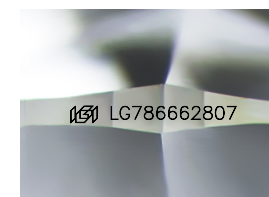
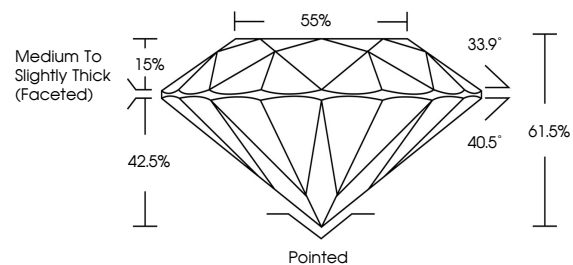
LG786662807
Report verification at igi.org



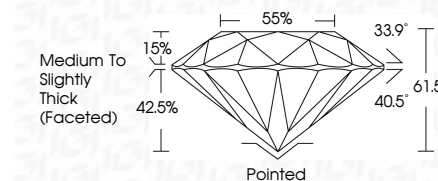
April 3, 2026
IGI Report Number **LG786662807**
Description **LABORATORY GROWN DIAMOND**
Shape and Cutting Style **ROUND BRILLIANT**
Measurements **6.43 - 6.45 X 3.96 MM**
GRADING RESULTS
Carat Weight **1.00 CARAT**
Color Grade **G**
Clarity Grade **VS 2**
Cut Grade **IDEAL**

April 3, 2026
IGI Report Number **LG786662807**
Description **LABORATORY GROWN DIAMOND**
Shape and Cutting Style **ROUND BRILLIANT**
Measurements **6.43 - 6.45 X 3.96 MM**
GRADING RESULTS
Carat Weight **1.00 CARAT**
Color Grade **G**
Clarity Grade **VS 2**
Cut Grade **IDEAL**

PROPORTIONS



Sample Image Used



ADDITIONAL GRADING INFORMATION
Polish **EXCELLENT**
Symmetry **EXCELLENT**
Fluorescence **NONE**
Inscription(s) **IGI LG786662807**
Comments: As Grown - No indication of post-growth treatment.
This Laboratory Grown Diamond was created by High Pressure High Temperature (HPHT) growth process.
Type II
Faint Blue

COLOR

D E F G H I J Faint Very Light Light

CLARITY

FL	IF	VS ¹⁻²	VS ¹⁻²	SI ¹⁻²	I ¹⁻³
Flawless	Internally Flawless	Very Very Slightly Included	Very Slightly Included	Slightly Included	Included

ADDITIONAL GRADING INFORMATION

Polish **EXCELLENT**
Symmetry **EXCELLENT**
Fluorescence **NONE**
Inscription(s) **IGI LG786662807**
Comments: As Grown - No indication of post-growth treatment.
This Laboratory Grown Diamond was created by High Pressure High Temperature (HPHT) growth process.
Type II
Faint Blue



IGI



April 3, 2026
IGI Report No LG786662807
ROUND BRILLIANT
Carat Weight **1.00 CARAT**
Color Grade **G**
Clarity Grade **VS 2**
Depth **IDEAL**
Table **61.5%**
Girdle **85%**
Medium To Slightly Thick (Faceted)
Culet **Pointed**
Polish **EXCELLENT**
Symmetry **EXCELLENT**
Fluorescence **NONE**
Inscriptions(s) **IGI LG786662807**
Comments: As Grown - No indication of post-growth treatment.
This Laboratory Grown Diamond was created by High Pressure High Temperature (HPHT) growth process.
Type II
Faint Blue