



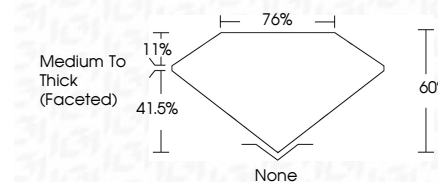
ELECTRONIC COPY

LG786661581
Report verification at igi.org



April 9, 2026
IGI Report Number **LG786661581**
Description **LABORATORY GROWN DIAMOND**
Shape and Cutting Style **MODIFIED KITE STEP CUT**
Measurements **25.18 X 12.91 X 7.74 MM**

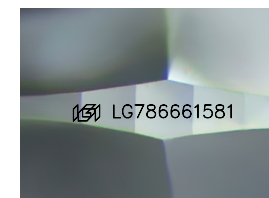
GRADING RESULTS
Carat Weight **16.50 CARATS**
Color Grade **F**
Clarity Grade **VVS 2**



ADDITIONAL GRADING INFORMATION
Polish **EXCELLENT**
Symmetry **EXCELLENT**
Fluorescence **NONE**
Inscription(s) **IGI LG786661581**
Comments: This Laboratory Grown Diamond was created by Chemical Vapor Deposition (CVD) growth process. Type IIa

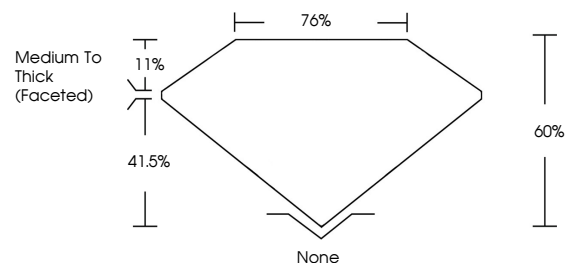


April 9, 2026
IGI Report No **LG786661581**
MODIFIED KITE STEP CUT
25.18 X 12.91 X 7.74 MM
Carat Weight **16.50 CARATS**
Color Grade **F**
Clarity Grade **VVS 2**
Depth **60%**
Table **76%**
Girdle **Medium To Thick (Faceted)**
Culet **None**
Polish **EXCELLENT**
Symmetry **EXCELLENT**
Fluorescence **NONE**
Inscription(s) **IGI LG786661581**
Comments: This Laboratory Grown Diamond was created by Chemical Vapor Deposition (CVD) growth process. Type IIa

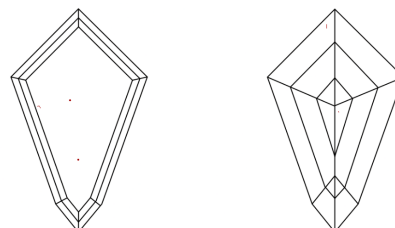


Sample Image Used

PROPORTIONS



CLARITY CHARACTERISTICS



KEY TO SYMBOLS

Red symbols indicate internal characteristics.
Green symbols indicate external characteristics.

COLOR

D E F G H I J Faint Very Light Light

CLARITY

FL	IF	VVS ¹⁻²	VS ¹⁻²	SI ¹⁻²	I ¹⁻³
Flawless	Internally Flawless	Very Very Slightly Included	Very Slightly Included	Slightly Included	Included

