



April 9, 2026

IGI Report Number LG786657296
**CUT CORNERED RECTANGULAR
MODIFIED BRILLIANT**
LABORATORY GROWN DIAMOND
6.94 X 4.87 X 3.48 MM

Carat Weight **0.99 CARAT**
Color Grade **D**
Clarity Grade **FLAWLESS**
Polish **EXCELLENT**
Symmetry **EXCELLENT**
Fluorescence **NONE**
Inscription(s) **IGI LG786657296**

Comments: As Grown - No indication of post-growth treatment. This Laboratory Grown Diamond was created by High Pressure High Temperature (HPHT) growth process. Type II

LABORATORY GROWN DIAMOND REPORT

April 9, 2026
IGI Report Number **LG786657296**
Description **LABORATORY GROWN DIAMOND**
Shape and Cutting Style **CUT CORNERED RECTANGULAR MODIFIED
BRILLIANT**
Measurements **6.94 X 4.87 X 3.48 MM**

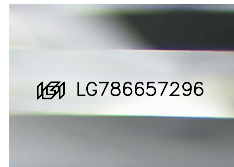
GRADING RESULTS

Carat Weight **0.99 CARAT**
Color Grade **D**
Clarity Grade **FLAWLESS**

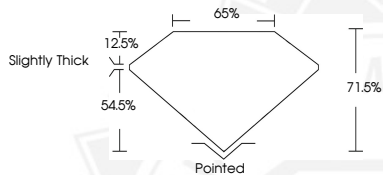
ADDITIONAL GRADING INFORMATION

Polish **EXCELLENT**
Symmetry **EXCELLENT**
Fluorescence **NONE**
Inscription(s) **IGI LG786657296**

Comments: As Grown - No indication of post-growth treatment. This Laboratory Grown Diamond was created by High Pressure High Temperature (HPHT) growth process. Type II



Sample Image Used



April 9, 2026

IGI Report Number LG786657296
**CUT CORNERED RECTANGULAR
MODIFIED BRILLIANT**
LABORATORY GROWN DIAMOND
6.94 X 4.87 X 3.48 MM

Carat Weight **0.99 CARAT**
Color Grade **D**
Clarity Grade **FLAWLESS**
Polish **EXCELLENT**
Symmetry **EXCELLENT**
Fluorescence **NONE**
Inscription(s) **IGI LG786657296**

Comments: As Grown - No indication of post-growth treatment. This Laboratory Grown Diamond was created by High Pressure High Temperature (HPHT) growth process. Type II



THIS DOCUMENT WAS PRODUCED WITH THE FOLLOWING SECURITY MEASURES: SPECIAL DOCUMENT PAPER, INK SCREENS, WATERMARK, BACKGROUND DESIGNS, HOLOGRAM AND OTHER SECURITY FEATURES NOT LISTED AND DO EXCEED DOCUMENT SECURITY INDUSTRY GUIDELINES.