



ELECTRONIC COPY

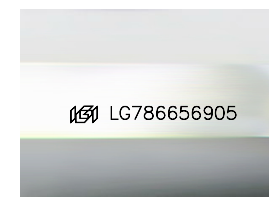
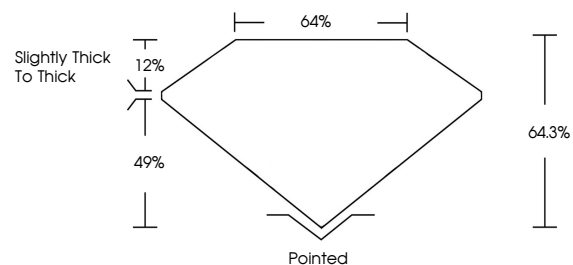
LG786656905
Report verification at igi.org



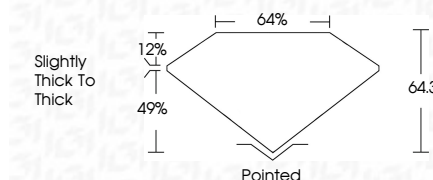
April 7, 2026
IGI Report Number **LG786656905**
Description **LABORATORY GROWN DIAMOND**
Shape and Cutting Style **CUT CORNERED
RECTANGULAR BRILLIANT**
Measurements **7.24 X 5.18 X 3.33 MM**
GRADING RESULTS
Carat Weight **1.06 CARAT**
Color Grade **D**
Clarity Grade **VVS 2**

April 7, 2026
IGI Report Number **LG786656905**
Description **LABORATORY GROWN DIAMOND**
Shape and Cutting Style **CUT CORNERED RECTANGULAR
BRILLIANT**
Measurements **7.24 X 5.18 X 3.33 MM**
GRADING RESULTS
Carat Weight **1.06 CARAT**
Color Grade **D**
Clarity Grade **VVS 2**

PROPORTIONS



Sample Image Used



ADDITIONAL GRADING INFORMATION

Polish **EXCELLENT**
Symmetry **EXCELLENT**
Fluorescence **NONE**
Inscription(s) **IGI LG786656905**

Comments: As Grown - No indication of post-growth treatment.
This Laboratory Grown Diamond was created by High Pressure High Temperature (HPHT) growth process. Type II

ADDITIONAL GRADING INFORMATION

Polish **EXCELLENT**
Symmetry **EXCELLENT**
Fluorescence **NONE**
Inscription(s) **IGI LG786656905**
Comments: As Grown - No indication of post-growth treatment.
This Laboratory Grown Diamond was created by High Pressure High Temperature (HPHT) growth process. Type II

COLOR

D E F G H I J Faint Very Light Light

CLARITY

FL	IF	VVS ¹⁻²	VS ¹⁻²	SI ¹⁻²	I ¹⁻³
Flawless	Internally Flawless	Very Very Slightly Included	Very Slightly Included	Slightly Included	Included



IGI

April 7, 2026
IGI Report No **LG786656905**
CUT CORNERED RECT. BRILLIANT
7.24 X 5.18 X 3.33 MM
Carat Weight **1.06 CARAT**
Color Grade **D**
Clarity Grade **VVS 2**
Depth **64.3%**
Table **12%**
Girdle **Slightly Thick To Thick**
Culet **Pointed**
Polish **EXCELLENT**
Symmetry **EXCELLENT**
Fluorescence **NONE**
Inscription(s) **IGI LG786656905**

Comments: As Grown - No indication of post-growth treatment.
This Laboratory Grown Diamond was created by High Pressure High Temperature (HPHT) growth process. Type II