



ELECTRONIC COPY

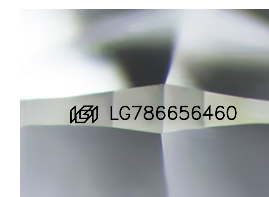
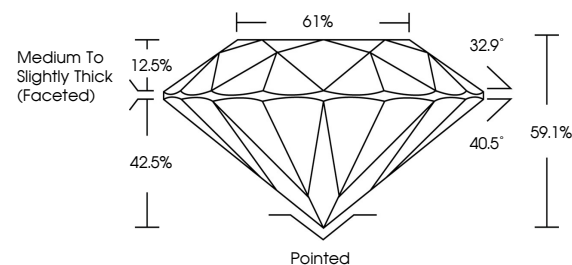
LG786656460
Report verification at igi.org



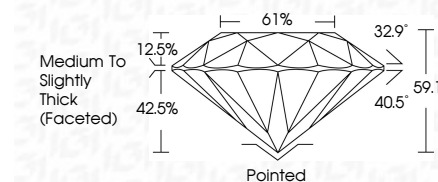
April 6, 2026
IGI Report Number **LG786656460**
Description **LABORATORY GROWN DIAMOND**
Shape and Cutting Style **ROUND BRILLIANT**
Measurements **6.90 - 6.93 X 4.09 MM**
GRADING RESULTS
Carat Weight **1.21 CARAT**
Color Grade **D**
Clarity Grade **VS 1**
Cut Grade **EXCELLENT**

April 6, 2026
IGI Report Number **LG786656460**
Description **LABORATORY GROWN DIAMOND**
Shape and Cutting Style **ROUND BRILLIANT**
Measurements **6.90 - 6.93 X 4.09 MM**
GRADING RESULTS
Carat Weight **1.21 CARAT**
Color Grade **D**
Clarity Grade **VS 1**
Cut Grade **EXCELLENT**

PROPORTIONS



Sample Image Used



ADDITIONAL GRADING INFORMATION

Polish **EXCELLENT**
Symmetry **EXCELLENT**
Fluorescence **NONE**
Inscription(s) **IGI LG786656460**

Comments: As Grown - No indication of post-growth treatment.
This Laboratory Grown Diamond was created by High Pressure High Temperature (HPHT) growth process.
Type II

COLOR

D E F G H I J Faint Very Light Light

CLARITY

FL	IF	VS ¹⁻²	VS ¹⁻²	SI ¹⁻²	I ¹⁻³
Flawless	Internally Flawless	Very Very Slightly Included	Very Slightly Included	Slightly Included	Included

ADDITIONAL GRADING INFORMATION

Polish **EXCELLENT**
Symmetry **EXCELLENT**
Fluorescence **NONE**
Inscription(s) **IGI LG786656460**
Comments: As Grown - No indication of post-growth treatment.
This Laboratory Grown Diamond was created by High Pressure High Temperature (HPHT) growth process.
Type II



IGI



April 6, 2026
IGI Report No LG786656460
ROUND BRILLIANT
6.90 - 6.93 X 4.09 MM
1.21 CARAT
Color Grade **D**
Clarity Grade **VS 1**
Depth **EXCELLENT**
Table **61%**
Girdle **Medium To Slightly Thick (Faceted)**
Culet **Pointed**
Polish **EXCELLENT**
Symmetry **EXCELLENT**
Fluorescence **NONE**
Inscriptions(s) **IGI LG786656460**
Comments: As Grown - No indication of post-growth treatment.
This Laboratory Grown Diamond was created by High Pressure High Temperature (HPHT) growth process.
Type II