



**INTERNATIONAL  
GEMOLOGICAL  
INSTITUTE**

**LABORATORY GROWN DIAMOND REPORT**

March 26, 2026  
 IGI Report Number **LG786654876**  
 Description **LABORATORY GROWN DIAMOND**  
 Shape and Cutting Style **ROUND BRILLIANT**  
 Measurements **5.69 - 5.73 X 3.47 MM**

**GRADING RESULTS**

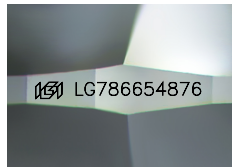
Carat Weight **0.70 CARAT**  
 Color Grade **G**  
 Clarity Grade **VS 1**  
 Cut Grade **EXCELLENT**

**ADDITIONAL GRADING INFORMATION**

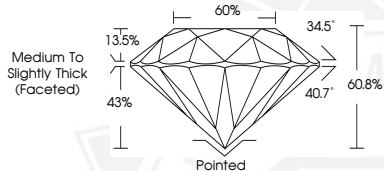
Polish **EXCELLENT**  
 Symmetry **EXCELLENT**  
 Fluorescence **NONE**  
 Inscription(s) **IGI LG786654876**

Comments: As Grown - No indication of post-growth treatment. This Laboratory Grown Diamond was created by High Pressure High Temperature (HPHT) growth process. Type II Faint Blue

**ELECTRONIC COPY**



Sample Image Used



March 26, 2026  
 IGI Report Number **LG786654876**  
**ROUND BRILLIANT**  
**LABORATORY GROWN DIAMOND**  
**5.69 - 5.73 X 3.47 MM**  
 Carat Weight **0.70 CARAT**  
 Color Grade **G**  
 Clarity Grade **VS 1**  
 Cut Grade **EXCELLENT**  
 Polish **EXCELLENT**  
 Symmetry **EXCELLENT**  
 Fluorescence **NONE**  
 Inscription(s) **IGI LG786654876**

Comments: As Grown - No indication of post-growth treatment. This Laboratory Grown Diamond was created by High Pressure High Temperature (HPHT) growth process. Type II Faint Blue



March 26, 2026  
 IGI Report Number **LG786654876**  
**ROUND BRILLIANT**  
**LABORATORY GROWN DIAMOND**  
**5.69 - 5.73 X 3.47 MM**  
 Carat Weight **0.70 CARAT**  
 Color Grade **G**  
 Clarity Grade **VS 1**  
 Cut Grade **EXCELLENT**  
 Polish **EXCELLENT**  
 Symmetry **EXCELLENT**  
 Fluorescence **NONE**  
 Inscription(s) **IGI LG786654876**

Comments: As Grown - No indication of post-growth treatment. This Laboratory Grown Diamond was created by High Pressure High Temperature (HPHT) growth process. Type II Faint Blue

THIS DOCUMENT WAS PRODUCED WITH THE FOLLOWING SECURITY MEASURES: SPECIAL DOCUMENT PAPER, INK SCREENS, WATERMARK, BACKGROUND DESIGNS, HOLOGRAM AND OTHER SECURITY FEATURES NOT LISTED AND DO EXCEED DOCUMENT SECURITY INDUSTRY GUIDELINES.

For terms & conditions and to verify this report, please visit [www.igi.org](http://www.igi.org)