



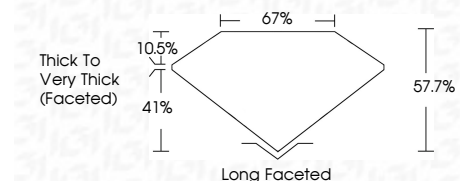
ELECTRONIC COPY

LG786644540
Report verification at igi.org



May 29, 2026
IGI Report Number **LG786644540**
Description **LABORATORY GROWN DIAMOND**
Shape and Cutting Style **ANTIQUÉ CUSHION CUT**
Measurements **10.24 X 7.81 X 4.51 MM**

GRADING RESULTS
Carat Weight **3.01 CARATS**
Color Grade **D**
Clarity Grade **VVS 2**



ADDITIONAL GRADING INFORMATION
Polish **EXCELLENT**
Symmetry **EXCELLENT**
Fluorescence **NONE**
Inscription(s) **IGI LG786644540**
Comments: This Laboratory Grown Diamond was created by Chemical Vapor Deposition (CVD) growth process. Type IIa



May 29, 2026
IGI Report No LG786644540
ANTIQUÉ CUSHION CUT
10.24 X 7.81 X 4.51 MM
3.01 CARATS
D
VVS 2
57.7%
67%
Thick to Very Thick (Faceted)
Long Faceted
EXCELLENT
EXCELLENT
NONE
IGI LG786644540
Comments: This Laboratory Grown Diamond was created by Chemical Vapor Deposition (CVD) growth process. Type IIa

LABORATORY GROWN DIAMOND REPORT

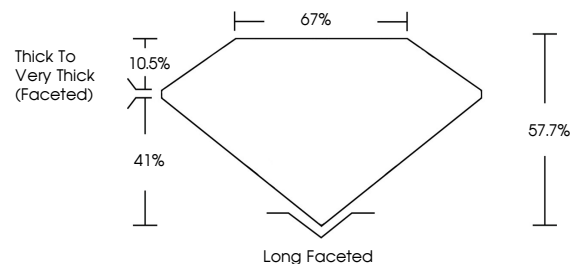
May 29, 2026
IGI Report Number **LG786644540**
Description **LABORATORY GROWN DIAMOND**
Shape and Cutting Style **ANTIQUÉ CUSHION CUT**
Measurements **10.24 X 7.81 X 4.51 MM**

GRADING RESULTS
Carat Weight **3.01 CARATS**
Color Grade **D**
Clarity Grade **VVS 2**

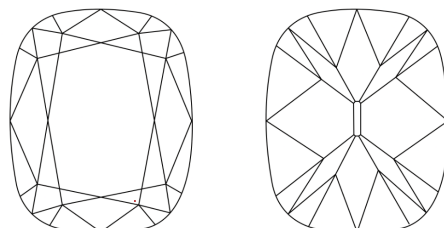
ADDITIONAL GRADING INFORMATION
Polish **EXCELLENT**
Symmetry **EXCELLENT**
Fluorescence **NONE**
Inscription(s) **IGI LG786644540**

Comments: This Laboratory Grown Diamond was created by Chemical Vapor Deposition (CVD) growth process. Type IIa

PROPORTIONS

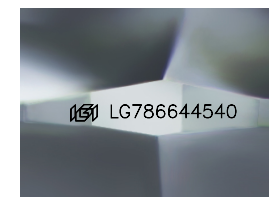


CLARITY CHARACTERISTICS



KEY TO SYMBOLS

Red symbols indicate internal characteristics.
Green symbols indicate external characteristics.



Sample Image Used

COLOR

D E F G H I J Faint Very Light Light

CLARITY

FL	IF	VVS ¹⁻²	VS ¹⁻²	SI ¹⁻²	I ¹⁻³
Flawless	Internally Flawless	Very Very Slightly Included	Very Slightly Included	Slightly Included	Included

